

Caspase 8 Rabbit Polyclonal Antibody(MTDY2)

Catalog No: RA20171

Basic Information

Host species	Rabbit
Applications	WB, IHC
Species Cross-Reactivity	H, R, M
Specificity	Antibody can detects endogenous Caspase 8 protein.
Recommended dilutions	WB: 1:1,000-2,000 IHC: 1:50-100 Optimal dilutions should be determined by the end user.

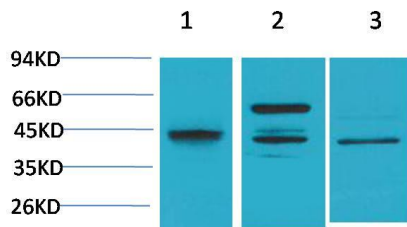
Applications

Formulation	PBS, pH 7.4, containing 0.02% sodium azide as Preservative and 50% Glycerol.
Storage	Store at -20°C. Avoid repeated freeze-thaw cycles.
Concentration	1 mg/ml
Clonality	Polyclonal

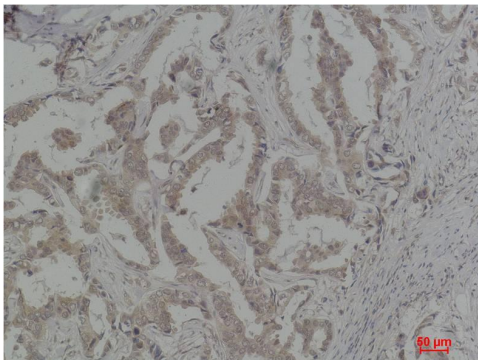
Background

Alternative Names	ALPS2B antibody, Apoptosis cysteine protease antibody, CAP4 antibody, CED3 antibody, MCH5 antibody
Observed band	43,57
Human Gene ID	841
Human Swiss-Prot Number	Q14790
Background	Caspase-8 is a caspase protein, encoded by the CASP8 gene. It most likely acts upon caspase-3. Activated caspase-8 cleaves and activates downstream effector caspases such as caspase-1, -3, -6, and -7.

Selected Validation Data



Western blot analysis of 1) HeLa, 2)Raw 264.7, 3)PC12 with Caspase 8 Rabbit pAb diluted at 1:2,000.



Immunohistochemical analysis of paraffin-embedded Human Breast Carcinoma using Caspase 8 Rabbit pAb diluted at 1:100.