

MEK5 Rabbit Polyclonal Antibody(F195)

Catalog No: RA20168

Basic Information

Host species	Rabbit
Applications	WB, IHC
Species Cross-Reactivity	H, R, M
Specificity	Antibody can detects endogenous MEK5 protein.
Recommended dilutions	WB: 1:1,000-2,000 IHC: 1:200-500 Optimal dilutions should be determined by the end user.

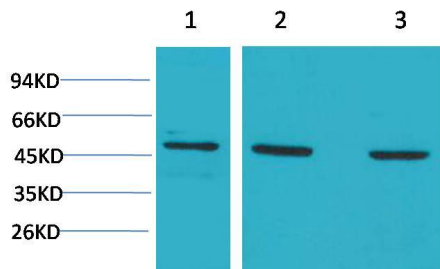
Applications

Formulation	Antigen Affinity Purified IgG in PBS, pH 7.4, containing 0.02% sodium azide as Preservative and 50% Glycerol.
Storage	Store at -20°C. Avoid repeated freeze-thaw cycles.
Concentration	1 mg/ml
Clonality	Polyclonal

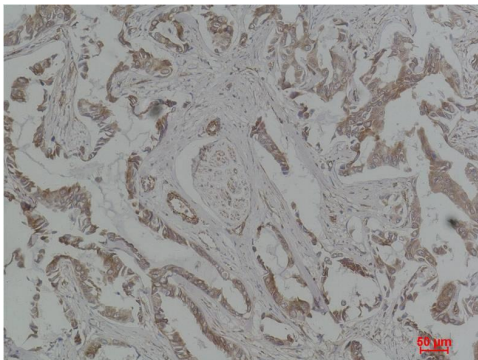
Background

Alternative Names	MP2K5 antibody, MAPK kinase kinase 5 antibody, MEK5 antibody, PRKMK 5 antibody
Observed band	49
Human Gene ID	5067
Human Swiss-Prot Number	Q13163
Background	Dual specificity mitogen-activated protein kinase kinase 5 is an enzyme that in humans is encoded by the MAP2K5 gene. The protein encoded by this gene is a dual specificity protein kinase that belongs to the MAP kinase kinase family. This kinase specifically interacts with and activates MAPK7/ERK5.

Selected Validation Data



Western blot analysis of 1) Hela, 2)3T3, 3)PC12 with MEK5 Rabbit pAb diluted at 1:2,000.



Immunohistochemical analysis of paraffin-embedded Human Breast Carcinoma using MEK5 Rabbit pAb diluted at 1:500.