

Caspase 3 Rabbit Polyclonal Antibody(F123)

Catalog No: RA20167

Basic Information

Host species	Rabbit
Applications	WB, IHC
Species Cross-Reactivity	H
Specificity	Antibody can detects endogenous Active Caspase 3 protein.
Recommended dilutions	WB: 1:1,000-2,000 IHC: 1:200-500 Optimal dilutions should be determined by the end user.

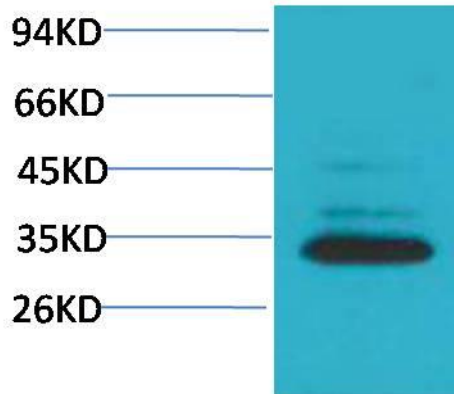
Applications

Formulation	Antigen Affinity Purified IgG in PBS, pH 7.4, containing 0.02% sodium azide as Preservative and 50% Glycerol.
Storage	Store at -20°C. Avoid repeated freeze-thaw cycles.
Concentration	1 mg/ml
Clonality	Polyclonal

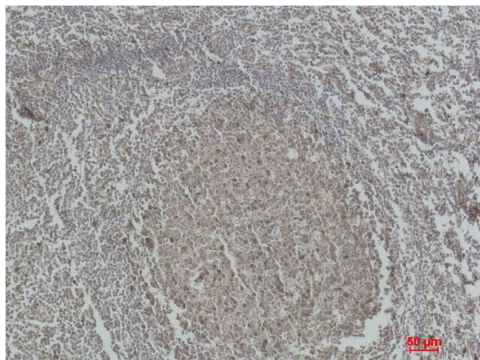
Background

Alternative Names	APOPAIN antibody, CASP 3 antibody, CPP32 antibody, Cysteine protease CPP32 antibody
Observed band	32
Human Gene ID	836
Human Swiss-Prot Number	P42574
Background	Caspase-3 (CPP-32, Apoptain, Yama, SCA-1) is a critical executioner of apoptosis, as it is either partially or totally responsible for the proteolytic cleavage of many key proteins such as the nuclear enzyme poly(ADP-ribose) polymerase (PARP).

Selected Validation Data



Western blot analysis of HeLa with Caspase 3 Rabbit pAb diluted at 1:2,000.



Immunohistochemical analysis of paraffin-embedded Human Tonsil Tissue using Caspase 3 Rabbit pAb diluted at 1:500.