

MEK2 Rabbit Polyclonal Antibody(F189)

Catalog No: RA20166

Basic Information

Host species	Rabbit
Applications	WB, IHC
Species Cross-Reactivity	H, R, M
Specificity	Antibody can detects endogenous MEK2 protein.
Recommended dilutions	WB: 1:1,000-2,000 IHC: 1:200-500 Optimal dilutions should be determined by the end user.

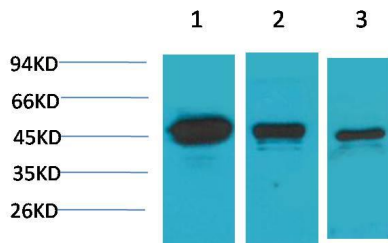
Applications

Formulation	Antigen Affinity Purified IgG in PBS, pH 7.4, containing 0.02% sodium azide as Preservative and 50% Glycerol.
Storage	Store at -20°C. Avoid repeated freeze-thaw cycles.
Concentration	1 mg/ml
Clonality	Polyclonal

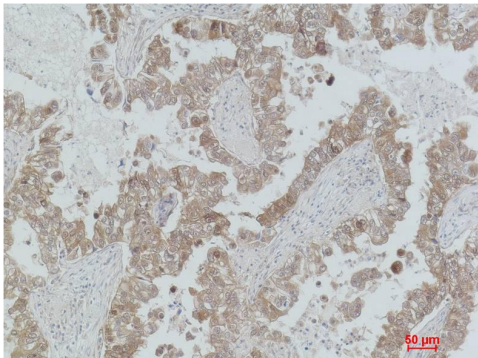
Background

Alternative Names	ERK activator kinase 2 antibody, MAPK kinase kinase 2 antibody, MEKK2 antibody, MKK2 antibody, PRKMK 2 antibody
Observed band	45
Human Gene ID	5605
Human Swiss-Prot Number	P36507
Background	MEK1 and MEK2, also called MAPK or Erk kinases, are dual-specificity protein kinases that function in a mitogen activated protein kinase cascade controlling cell growth and differentiation. Catalyzes the concomitant phosphorylation of a threonine and a tyrosine residue in a Thr-Glu-Tyr sequence located in MAP kinases. Activates ERK1 and ERK2 MAP kinases.

Selected Validation Data



Western blot analysis of 1) HeLa, 2)3T3, 3)PC12 with MEK2 Rabbit pAb diluted at 1:2,000.



Immunohistochemical analysis of paraffin-embedded Human Lung Carcinoma using MEK2 Rabbit pAb diluted at 1:500.