

# MEK1 Rabbit Polyclonal Antibody(F187)

## Catalog No: RA20165

### Basic Information

Host species	Rabbit
Applications	WB, IHC
Species Cross-Reactivity	H, R, M
Specificity	Antibody can detects endogenous MEK1 protein.
Recommended dilutions	WB: 1:1,000-2,000      IHC: 1:100-200 Optimal dilutions should be determined by the end user.

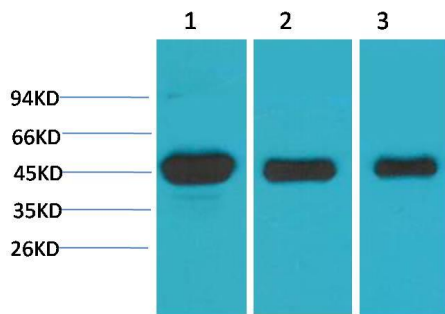
### Applications

Formulation	Antigen Affinity Purified IgG in PBS, pH 7.4, containing 0.02% sodium azide as Preservative and 50% Glycerol.
Storage	Store at -20°C. Avoid repeated freeze-thaw cycles.
Concentration	1 mg/ml
Clonality	Polyclonal

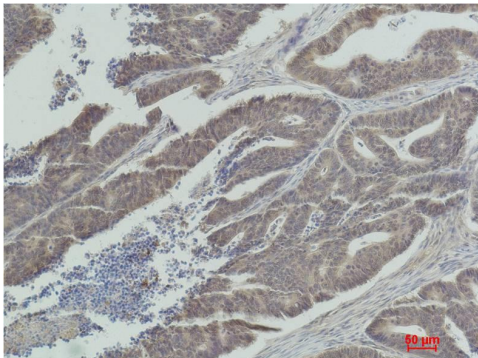
### Background

Alternative Names	ERK activator kinase 1 antibody, MAPK kinase kinase 1 antibody, MEKK1 antibody, MKK1 antibody, PRKMK 1 antibody
Observed band	45
Human Gene ID	5604
Human Swiss-Prot Number	Q02750
Background	MEK1 and MEK2, also called MAPK or Erk kinases, are dual-specificity protein kinases that function in a mitogen activated protein kinase cascade controlling cell growth and differentiation. Catalyzes the concomitant phosphorylation of a threonine and a tyrosine residue in a Thr-Glu-Tyr sequence located in MAP kinases. Activates ERK1 and ERK2 MAP kinases.

## Selected Validation Data



Western blot analysis of 1) HeLa, 2)3T3, 3)PC12 with MEK1 Rabbit pAb diluted at 1:2,000.



Immunohistochemical analysis of paraffin-embedded Human Colon Carcinoma using MEK1 Rabbit pAb diluted at 1:200.