

# P70 S6 Kinase Rabbit Polyclonal Antibody(F293)

**Catalog No: RA20162**

## Basic Information

Host species	Rabbit
Applications	WB, IHC
Species Cross-Reactivity	H, R, M
Specificity	Antibody can detects endogenous P70 S6 Kinase protein.
Recommended dilutions	WB: 1:1,000-2,000    IHC: 1:200-500 Optimal dilutions should be determined by the end user.

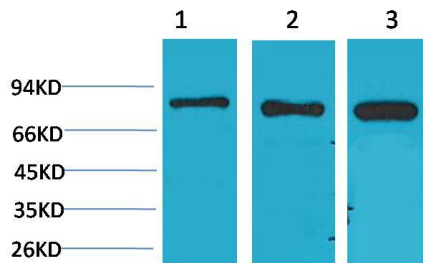
## Applications

Formulation	Antigen Affinity Purified IgG in PBS, pH 7.4, containing 0.02% sodium azide as Preservative and 50% Glycerol.
Storage	Store at -20°C. Avoid repeated freeze-thaw cycles.
Concentration	1 mg/ml
Clonality	Polyclonal

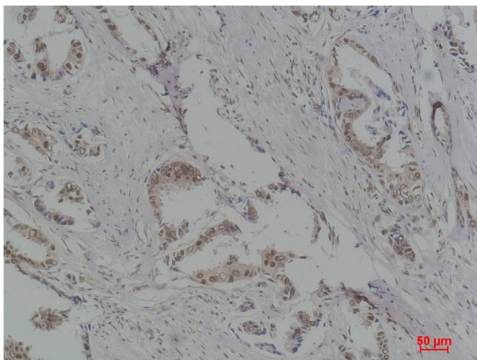
## Background

Alternative Names	S6K1 antibody, P70 beta 1 antibody, P70 alpha antibody, KS6B1 antibody, STK14A antibody
Observed band	70,85
Human Gene ID	6198
Human Swiss-Prot Number	P23443
Background	p70 S6 kinase is a mitogen activated Ser/Thr protein kinase that is required for cell growth and G1 cell cycle progression. Belongs to the protein kinase superfamily. AGC Ser/Thr protein kinase family. S6 kinase subfamily.

## Selected Validation Data



Western blot analysis of 1) Hela, 2)3T3, 3)PC12 with P70 S6 Kinase Rabbit pAb diluted at 1:2,000.



Immunohistochemical analysis of paraffin-embedded Human Breast Carcinoma using P70 S6 Kinase Rabbit pAb diluted at 1:500.