

# c-Raf Rabbit Polyclonal Antibody(F275)

## Catalog No: RA20161

### Basic Information

Host species	Rabbit
Applications	WB, IHC
Species Cross-Reactivity	H
Specificity	Antibody can detects endogenous c-Raf protein.
Recommended dilutions	WB: 1:1,000-2,000      IHC: 1:50-200 Optimal dilutions should be determined by the end user.

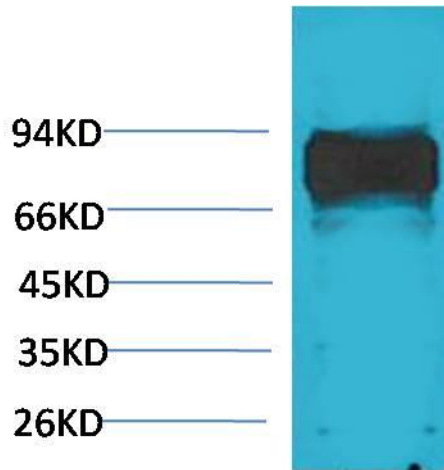
### Applications

Formulation	Antigen Affinity Purified IgG in PBS, pH 7.4, containing 0.02% sodium azide as Preservative and 50% Glycerol.
Storage	Store at -20°C. Avoid repeated freeze-thaw cycles.
Concentration	1 mg/ml
Clonality	Polyclonal

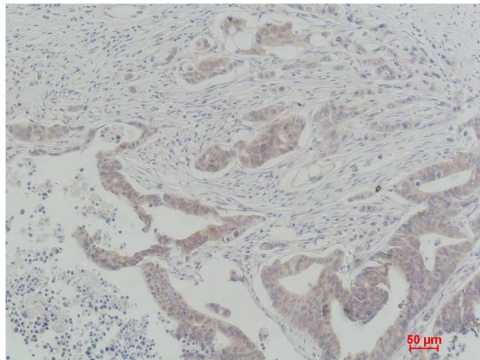
### Background

Alternative Names	c-Raf proto-oncogene, serine/threonine kinase antibody, EC2.7.11.1 antibody, NS5 antibody, Raf 1 antibody
Observed band	75
Human Gene ID	5894
Human Swiss-Prot Number	P04049
Background	A-Raf, B-Raf, and c-Raf (Raf-1) are the main effectors recruited by GTP-bound Ras to activate the MEK-MAP kinase pathway. C-Raf is a member of the Raf kinase family of serine/threonine-specific protein kinases, from the TKL (Tyrosine-kinase-like) group of kinases.

Selected Validation Data



Western blot analysis of HeLa with c-Raf Rabbit pAb diluted at 1:2,000.



Immunohistochemical analysis of paraffin-embedded Human Colon Carcinoma using c-Raf Rabbit pAb diluted at 1:200.