

Calnexin Rabbit Polyclonal Antibody(F272)

Catalog No: RA20160

Basic Information

Host species	Rabbit
Applications	WB, IHC
Species Cross-Reactivity	H, R, M
Specificity	Antibody can detects endogenous Calnexin protein.
Recommended dilutions	WB: 1:1,000-2,000 IHC: 1:200-500 Optimal dilutions should be determined by the end user.

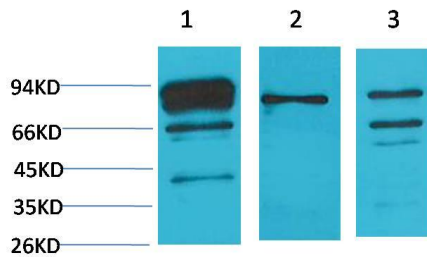
Applications

Formulation	Antigen Affinity Purified IgG in PBS, pH 7.4, containing 0.02% sodium azide as Preservative and 50% Glycerol.
Storage	Store at -20°C. Avoid repeated freeze-thaw cycles.
Concentration	1 mg/ml
Clonality	Polyclonal

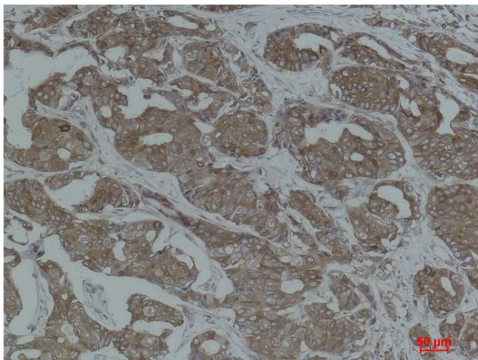
Background

Alternative Names	CANX antibody, CNX antibody, FLJ26570 antibody, IP90 antibody, P90 antibody
Observed band	75,80,90
Human Gene ID	821
Human Swiss-Prot Number	P27824
Background	Calnexin is a chaperone, characterized by assisting protein folding and quality control, ensuring that only properly folded and assembled proteins proceed further along the secretory pathway. Calnexin is a integral protein (that appears variously as a 90kDa, 80kDa or 75kDa band on western blotting depending on the source of the antibody) of the endoplasmic reticulum (ER). It consists of a large (50 kDa) N-terminal calcium-binding luminal domain, a single transmembrane helix and a short (90 residues), acidic cytoplasmic tail.

Selected Validation Data



Western blot analysis of 1) HeLa, 2)3T3, 3)PC12 with Calnexin Rabbit pAb diluted at 1:2,000.



Immunohistochemical analysis of paraffin-embedded Human Breast Carcinoma using Calnexin Rabbit pAb diluted at 1:500.