

# STAT2 Rabbit Polyclonal Antibody(F243)

## Catalog No: RA20158

### Basic Information

Host species	Rabbit
Applications	WB
Species Cross-Reactivity	H, R, M
Specificity	Antibody can detects endogenous STAT2 protein.
Recommended dilutions	WB: 1:500-1,000 Optimal dilutions should be determined by the end user.

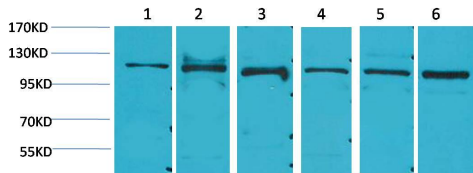
### Applications

Formulation	Antigen Affinity Purified IgG in PBS, pH 7.4, containing 0.02% sodium azide as Preservative and 50% Glycerol.
Storage	Store at -20°C. Avoid repeated freeze-thaw cycles.
Concentration	1 mg/ml
Clonality	Polyclonal

### Background

Alternative Names	ISGF3 antibody, P113 antibody, STAT113 antibody, MGC59816 antibody
Observed band	113
Human Gene ID	6773
Human Swiss-Prot Number	P52630
Background	Signal transducer and activator of transcription 2 is a protein that in humans is encoded by the STAT2 gene. Stat2 is rapidly activated by phosphorylation at Tyr690 in response to stimulation by IFN-alpha/beta via associations with receptor-bound Jak kinases.

## Selected Validation Data



Western blot analysis of 1) HeLa, 2)K562, 3)3T3, 4) Mouse Heart Tissue, 5) Rat Heart Tissue, 6) Rat Kidney Tissue with STAT2 Rabbit pAb diluted at 1:2,000.