

SOD2 Rabbit Polyclonal Antibody(F239)

Catalog No: RA20157

Basic Information

Host species	Rabbit
Applications	WB, IHC
Species Cross-Reactivity	H, R, M
Specificity	Antibody can detects endogenous SOD2 protein.
Recommended dilutions	WB: 1:1,000-2,000 IHC:1:200-500 Optimal dilutions should be determined by the end user.

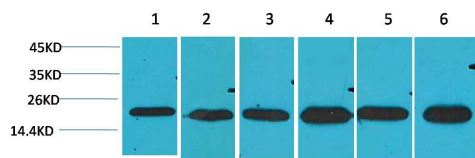
Applications

Formulation	Antigen Affinity Purified IgG in PBS, pH 7.4, containing 0.02% sodium azide as Preservative and 50% Glycerol.
Storage	Store at -20°C. Avoid repeated freeze-thaw cycles.
Concentration	1 mg/ml
Clonality	Polyclonal

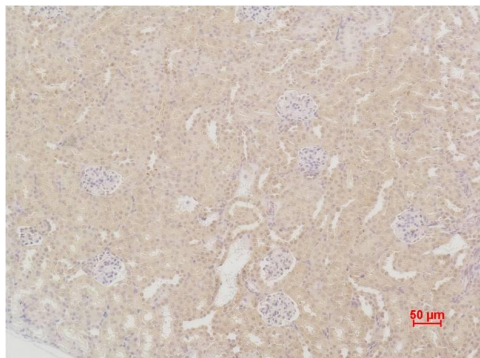
Background

Alternative Names	IPO B antibody, Manganese SOD antibody, Superoxide dismutase mitochondrial antibody
Observed band	22
Human Gene ID	6648
Human Swiss-Prot Number	P04179
Background	Superoxide dismutase 2, mitochondrial, also known as SOD2, is an enzyme which in humans is encoded by the SOD2 gene. This gene is a member of the iron/manganese superoxide dismutase family. It encodes a mitochondrial matrix protein that forms a homotetramer and binds one manganese ion per subunit.

Selected Validation Data



Western blot analysis of 1) HeLa, 2) HepG2, 3) C2C12, 4) Mouse Liver Tissue, 5) Rat Brain Tissue, 6) Rat Liver Tissue with SOD2 Rabbit pAb diluted at 1:2,000.



Immunohistochemical analysis of paraffin-embedded Mouse Kidney Tissue using SOD2 Rabbit pAb diluted at 1:200.