

# PI3 Kinase P85 $\beta$ Rabbit Polyclonal Antibody(F221)

## Catalog No: RA20156

### Basic Information

Host species	Rabbit
Applications	WB, IHC
Species Cross-Reactivity	H
Specificity	Antibody can detects endogenous PI3 Kinase P85 $\beta$ protein.
Recommended dilutions	WB: 1:1,000-2,000    IHC: 1:50-200 Optimal dilutions should be determined by the end user.

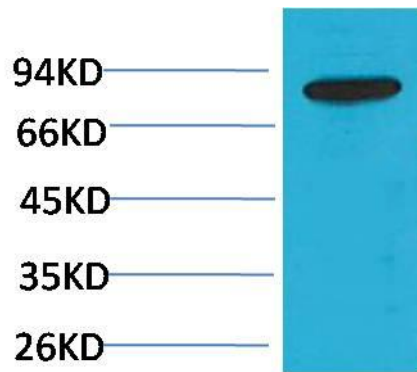
### Applications

Formulation	Antigen Affinity Purified IgG in PBS, pH 7.4, containing 0.02% sodium azide as Preservative and 50% Glycerol.
Storage	Store at -20°C. Avoid repeated freeze-thaw cycles.
Concentration	1 mg/ml
Clonality	Polyclonal

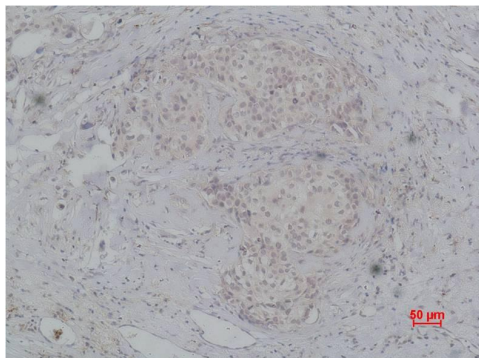
### Background

Alternative Names	P85 antibody, p85 beta antibody, PIK3R2 antibody, Phosphoinositide 3 kinase regulatory subunit 2 antibody
Observed band	82
Human Gene ID	5296
Human Swiss-Prot Number	O00459
Background	PI3 Kinase P85 $\beta$ mediating the association of the p110 catalytic unit to the plasma membrane.

Selected Validation Data



Western blot analysis of HepG2 with PI3 Kinase P85 $\beta$  Rabbit pAb diluted at 1:2,000.



Immunohistochemical analysis of paraffin-embedded human breast carcinoma using PI3 Kinase P85 $\beta$  Rabbit pAb diluted at 1:200.