

Smad3 Rabbit Polyclonal Antibody(F233)

Catalog No: RA20154

Basic Information

Host species	Rabbit
Applications	WB, IHC
Species Cross-Reactivity	H, R, M
Specificity	Antibody can detects endogenous Smad3 protein.
Recommended dilutions	WB: 1:1,000-2,000 IHC:1:200-500 Optimal dilutions should be determined by the end user.

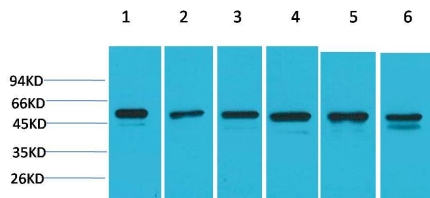
Applications

Formulation	Antigen Affinity Purified IgG in PBS, pH 7.4, containing 0.02% sodium azide as Preservative and 50% Glycerol.
Storage	Store at -20°C. Avoid repeated freeze-thaw cycles.
Concentration	1 mg/ml
Clonality	Polyclonal

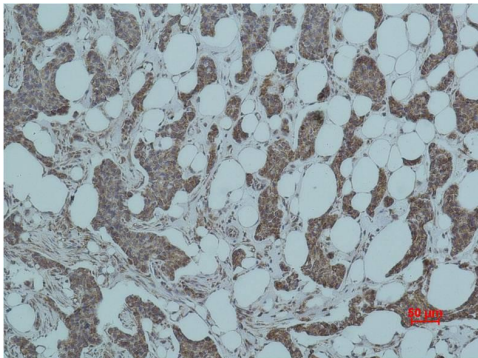
Background

Alternative Names	hMAD3 antibody, HSPC193 antibody, LDS1C antibody, MADH3 antibody, JV15 2 antibody
Observed band	50
Human Gene ID	4088
Human Swiss-Prot Number	P84022
Background	Receptor-regulated SMAD (R-SMAD) that is an intracellular signal transducer and transcriptional modulator activated by TGF-beta (transforming growth factor) and activin type 1 receptor kinases. Binds the TRE element in the promoter region of many genes that are regulated by TGF-beta and, on formation of the SMAD3/SMAD4 complex, activates transcription.

Selected Validation Data



Western blot analysis of 1) A431, 2) Hela, 3)C2C12, 4)3T3, 5) PC12, 6) Rat Brain Tissue, with Smad3 Rabbit pAb diluted at 1:2,000.



Immunohistochemical analysis of paraffin-embedded human Breast carcinoma using Smad3 Rabbit pAb diluted at 1:500.