

STAT2 Rabbit Polyclonal Antibody(F242)

Catalog No: RA20153

Basic Information

Host species	Rabbit
Applications	WB, IHC
Species Cross-Reactivity	H, R, M
Specificity	Antibody can detects endogenous STAT2 protein.
Recommended dilutions	WB: 1:1,000-2,000 IHC: 1:200-500 Optimal dilutions should be determined by the end user.

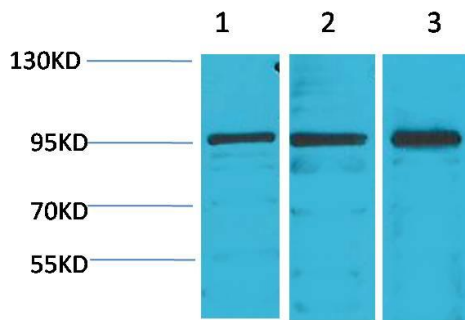
Applications

Formulation	Antigen Affinity Purified IgG in PBS, pH 7.4, containing 0.02% sodium azide as Preservative and 50% Glycerol.
Storage	Store at -20°C. Avoid repeated freeze-thaw cycles.
Concentration	1 mg/ml
Clonality	Polyclonal

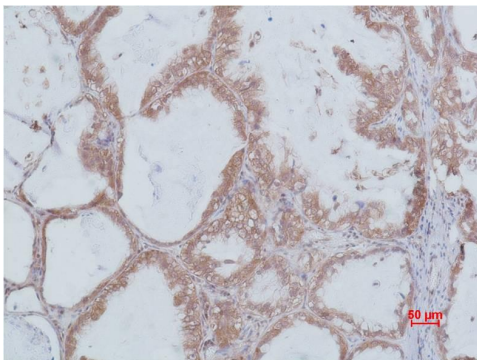
Background

Alternative Names	ISGF 3 antibody, p113 antibody, STAT113 antibody, MGC59816 antibody
Observed band	98
Human Gene ID	6773
Human Swiss-Prot Number	P52630
Background	Signal transducer and activator of transcription that mediates signaling by type I IFNs (IFN-alpha and IFN-beta). Following type I IFN binding to cell surface receptors, Jak kinases (TYK2 and JAK1) are activated, leading to tyrosine phosphorylation of STAT1 and STAT2.

Selected Validation Data



Western blot analysis of 1) K562, 2) Mouse Heart Tissue, 3) Rat Heart Tissue, with STAT2 Rabbit pAb diluted at 1:2,000.



Immunohistochemical analysis of paraffin-embedded Human Lung carcinoma using STAT2 Rabbit pAb diluted at 1:500.