

SOD2 Rabbit Polyclonal Antibody(F238)

Catalog No: RA20147

Basic Information

| | |
|--------------------------|--|
| Host species | Rabbit |
| Applications | WB, IHC |
| Species Cross-Reactivity | H, R, M |
| Specificity | Antibody can detects endogenous SOD2 protein. |
| Recommended dilutions | WB: 1:1,000-2,000 IHC: 1:200-500 Optimal dilutions should be determined by the end user. |

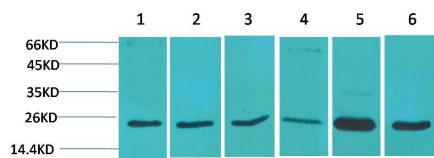
Applications

| | |
|---------------|---|
| Formulation | Antigen Affinity Purified IgG in PBS, pH 7.4, containing 0.02% sodium azide as Preservative and 50% Glycerol. |
| Storage | Store at -20°C. Avoid repeated freeze-thaw cycles. |
| Concentration | 1 mg/ml |
| Clonality | Polyclonal |

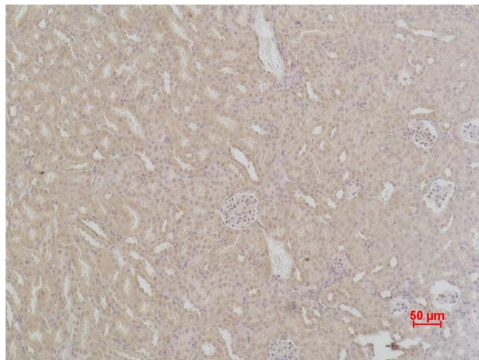
Background

| | |
|-------------------------|--|
| Alternative Names | IPO B antibody, Manganese SOD antibody, Superoxide dismutase mitochondrial antibody |
| Observed band | 22 |
| Human Gene ID | 6648 |
| Human Swiss-Prot Number | P04179 |
| Background | Superoxide dismutase 2, mitochondrial, also known as SOD2, is an enzyme which in humans is encoded by the SOD2 gene. This gene is a member of the iron/manganese superoxide dismutase family. It encodes a mitochondrial matrix protein that forms a homotetramer and binds one manganese ion per subunit. |

Selected Validation Data



Western blot analysis of 1) 293T, 2) HeLa, 3)C2C12, 4)3T3, 5) Rat Liver Tissue, 6) Rat Brain Tissue, with SOD2 Rabbit pAb diluted at 1:2,000.



Immunohistochemical analysis of paraffin-embedded Mouse Kidney Tissue using SOD2 Rabbit pAb diluted at 1:500.