

# SOD1 Rabbit Polyclonal Antibody(F237)

## Catalog No: RA20146

### Basic Information

Host species	Rabbit
Applications	WB, IHC
Species Cross-Reactivity	H, R, M
Specificity	Antibody can detects endogenous SOD1 protein.
Recommended dilutions	WB: 1:2,000-5,000      IHC: 1:200-500 Optimal dilutions should be determined by the end user.

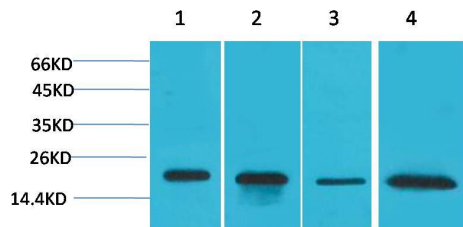
### Applications

Formulation	Antigen Affinity Purified IgG in PBS, pH 7.4, containing 0.02% sodium azide as Preservative and 50% Glycerol.
Storage	Store at -20°C. Avoid repeated freeze-thaw cycles.
Concentration	1 mg/ml
Clonality	Polyclonal

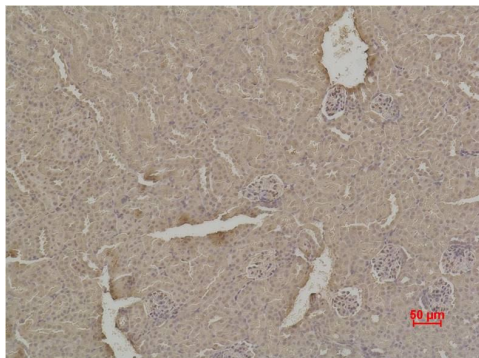
### Background

Alternative Names	CALS1 antibody, Cu/Zn SOD antibody, Superoxide dismutase 1 antibody
Observed band	18
Human Gene ID	6647
Human Swiss-Prot Number	P00441
Background	Superoxide dismutase [Cu-Zn] also known as superoxide dismutase 1 or SOD1 is an enzyme that in humans is encoded by the SOD1 gene, located on chromosome 21. SOD1 is one of three human superoxide dismutases.

## Selected Validation Data



Western blot analysis of 1) HeLa, 2) MCF7, 3) Mouse Brain Tissue, 4) Rat Brain Tissue, with SOD1 Rabbit pAb diluted at 1:2,000.



Immunohistochemical analysis of paraffin-embedded Mouse Kidney Tissue using SOD1 Rabbit pAb diluted at 1:500.