

eEF1A2 Binding Protein Rabbit Polyclonal Antibody(1)

Catalog No: RA20143

Basic Information

Host species	Rabbit
Applications	WB, IHC
Species Cross-Reactivity	H, R, M, Pg
Specificity	Antibody can detects endogenous eEF1A2 binding protein.
Recommended dilutions	WB: 1:2,000-5,000 IHC: 1:200-500 Optimal dilutions should be determined by the end user.

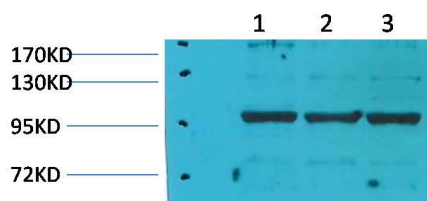
Applications

Formulation	Antigen Affinity Purified IgG in PBS, pH 7.4, containing 0.02% sodium azide as Preservative and 50% Glycerol.
Storage	Store at -20°C. Avoid repeated freeze-thaw cycles.
Concentration	1 mg/ml
Clonality	Polyclonal

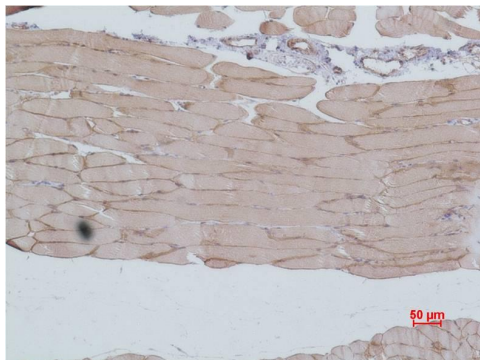
Background

Alternative Names	IGFN1 antibody, immunoglobulin-like and fibronectin type III domain containing 1 antibody, EEF1A2BP1 antibody
Observed band	115
Human Gene ID	91156
Human Swiss-Prot Number	Q86VF2
Background	Elongation factor 1-alpha 2 is a protein that in humans is encoded by the EEF1A2 gene. This gene encodes an isoform of the alpha subunit of the elongation factor-1 complex, which is responsible for the enzymatic delivery of aminoacyl tRNAs to the ribosome.

Selected Validation Data



Western blot analysis of 1) Pig Skeletal Muscle Tissue, 2) Rat Skeletal Muscle Tissue, 3) Rat Skeletal Muscle Tissue with eEF1A2 Rabbit pAb diluted at 1:5,000.



Immunohistochemical analysis of paraffin-embedded Mouse Skeletal Muscle Tissue using eEF1A2 Rabbit pAb diluted at 1:500.