

Calcium Sensing Receptor Rabbit Polyclonal Antibody(A192)

Catalog No: RA20139

Basic Information

Host species	Rabbit
Applications	WB, IHC
Species Cross-Reactivity	R, M
Specificity	Antibody can detects endogenous Calcium Sensing Receptor protein.
Recommended dilutions	WB: 1:500-1,000 IHC: 1:200-500 Optimal dilutions should be determined by the end user.

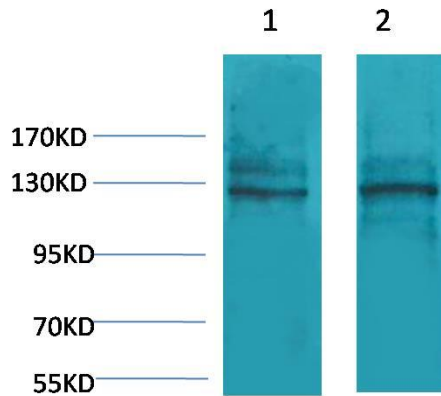
Applications

Formulation	Antigen Affinity Purified IgG in PBS, pH 7.4, containing 0.02% sodium azide as Preservative and 50% Glycerol.
Storage	Store at -20°C. Avoid repeated freeze-thaw cycles.
Concentration	1 mg/ml
Clonality	Polyclonal

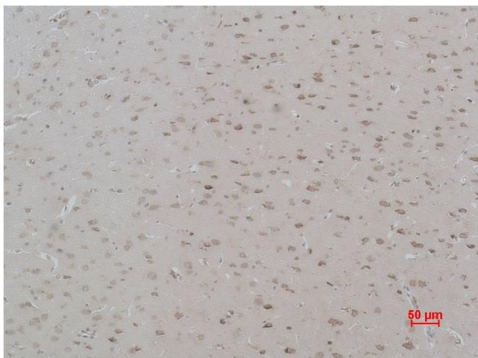
Background

Alternative Names	Ca ²⁺ sensing receptor antibody, CASR antibody, EIG8 antibody, FIH antibody
Observed band	130
Human Gene ID	846
Human Swiss-Prot Number	P41180
Background	The calcium-sensing receptor (CaSR) is a Class C G-protein coupled receptor which senses extracellular levels of calcium ion. In the parathyroid gland, the calcium-sensing receptor controls calcium homeostasis by regulating the release of parathyroid hormone.

Selected Validation Data



Western blot analysis of 1) Mouse Brain Tissue, 2) Rat Brain Tissue with Calcium Sensing Receptor Rabbit pAb diluted at 1:2,000.



Immunohistochemical analysis of paraffin-embedded Rat Brain Tissue using Calcium Sensing Receptor Rabbit pAb diluted at 1:500.