

CALHM1 Rabbit Polyclonal Antibody(A191)

Catalog No: RA20138

Basic Information

Host species	Rabbit
Applications	WB, IHC
Species Cross-Reactivity	H, R
Specificity	Antibody can detects endogenous CALHM1 protein.
Recommended dilutions	WB: 1:500-1,000 IHC: 1:200-500 Optimal dilutions should be determined by the end user.

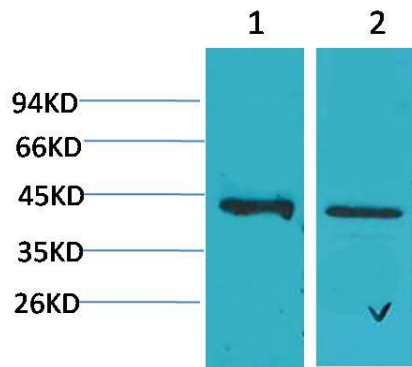
Applications

Formulation	Antigen Affinity Purified IgG in PBS, pH 7.4, containing 0.02% sodium azide as Preservative and 50% Glycerol.
Storage	Store at -20°C. Avoid repeated freeze-thaw cycles.
Concentration	1 mg/ml
Clonality	Polyclonal

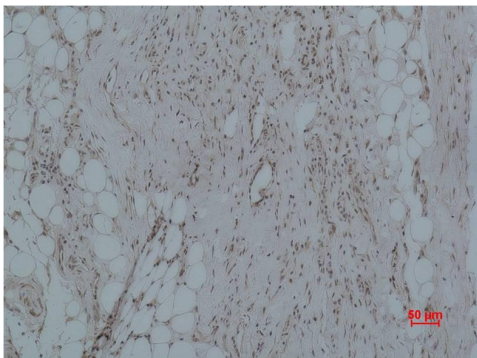
Background

Alternative Names	Calcium Homeostasis modulator 1 antibody, FAM26C antibody, MGC39514 antibody
Observed band	40
Human Gene ID	255022
Human Swiss-Prot Number	Q8IU99
Background	Calcium homeostasis modulator 1 (CALHM1) is a pore-forming membrane protein that in humans is encoded by the CALHM1 gene.

Selected Validation Data



Western blot analysis of 1) Human Brain Tissue, 2) Rat Brain Tissue with CALHM1 Rabbit pAb diluted at 1:2,000.



Immunohistochemical analysis of paraffin-embedded Human Hepatocarcinoma using CALHM1 Rabbit pAb diluted at 1:500.