

NMBR (Bombesin Receptor 1) Rabbit Polyclonal Antibody(A186)

Catalog No: RA20136

Basic Information

Host species	Rabbit
Applications	WB, IHC
Species Cross-Reactivity	H, R, M
Specificity	Antibody can detects endogenous NMBR protein.
Recommended dilutions	WB: 1:1,000-2,000 IHC: 1:200-500 Optimal dilutions should be determined by the end user.

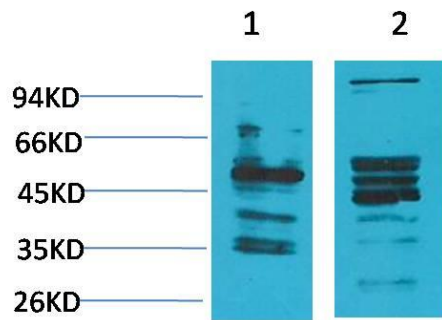
Applications

Formulation	Antigen Affinity Purified IgG in PBS, pH 7.4, containing 0.02% sodium azide as Preservative and 50% Glycerol.
Storage	Store at -20°C. Avoid repeated freeze-thaw cycles.
Concentration	1 mg/ml
Clonality	Polyclonal

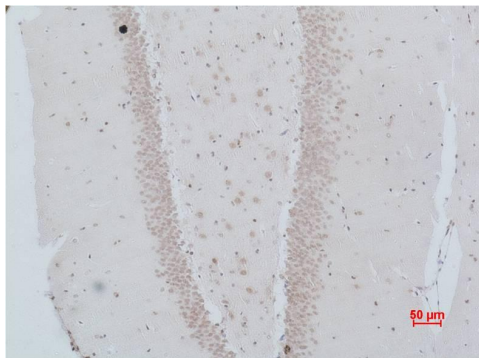
Background

Alternative Names	Neuromedin B receptor antibody, Bombesin Receptor 1 antibody, BB1 antibody
Observed band	50
Human Gene ID	4829
Human Swiss-Prot Number	P28336
Background	Receptor for neuromedin-B. Belongs to the G-protein coupled receptor 1 family.

Selected Validation Data



Western blot analysis of 1) Human Brain Tissue, 2) Rat Brain Tissue with NMBR (Bombesin Receptor 1) Rabbit pAb diluted at 1:2,000.



Immunohistochemical analysis of paraffin-embedded Rat Brain Tissue using NMBR (Bombesin Receptor 1) Rabbit pAb diluted at 1:500.