

# Histone H2A.X Rabbit Polyclonal Antibody(A280)

**Catalog No: RA20135**

## Basic Information

Host species	Rabbit
Applications	WB, IHC
Species Cross-Reactivity	R, M
Specificity	Antibody can detects endogenous Histone H2A.X protein.
Recommended dilutions	WB: 1:1,000-2,000      IHC: 1:200-500 Optimal dilutions should be determined by the end user.

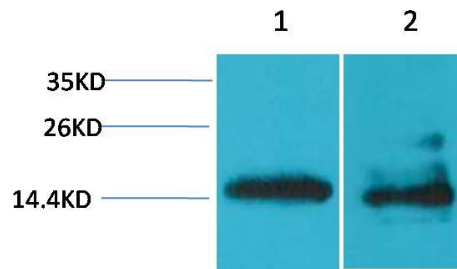
## Applications

Formulation	Antigen Affinity Purified IgG in PBS, pH 7.4, containing 0.02% sodium azide as Preservative and 50% Glycerol.
Storage	Store at -20°C. Avoid repeated freeze-thaw cycles.
Concentration	1 mg/ml
Clonality	Polyclonal

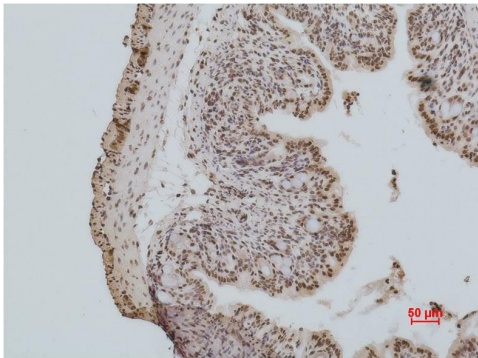
## Background

Alternative Names	H2A histone family member X antibody, H2AFX antibody, H2AX Histoneh antibody, Histone H2AX antibody
Observed band	14
Human Gene ID	3014
Human Swiss-Prot Number	P16104
Background	Histone H2A which replaces conventional H2A in a subset of nucleosomes. Nucleosomes wrap and compact DNA into chromatin, limiting DNA accessibility to the cellular machineries which require DNA as a template.

## Selected Validation Data



Western blot analysis of 1) 3T3, 2) Rat Brain Tissue with Histone H2A.X Rabbit pAb diluted at 1:2,000.



Immunohistochemical analysis of paraffin-embedded Mouse Colon Tissue using Histone H2A.X Rabbit pAb diluted at 1:500.