

Bestrophin-2 Rabbit Polyclonal Antibody(A185)

Catalog No: RA20134

Basic Information

Host species	Rabbit
Applications	WB, IHC
Species Cross-Reactivity	R, M
Specificity	Antibody can detects endogenous Bestrophin-2 protein.
Recommended dilutions	WB: 1:500-1,000 IHC: 1:200-500 Optimal dilutions should be determined by the end user.

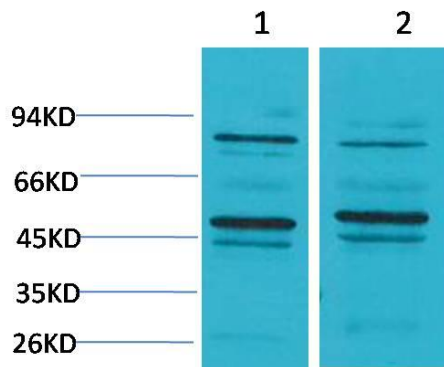
Applications

Formulation	Antigen Affinity Purified IgG in PBS, pH 7.4, containing 0.02% sodium azide as Preservative and 50% Glycerol.
Storage	Store at -20°C. Avoid repeated freeze-thaw cycles.
Concentration	1 mg/ml
Clonality	Polyclonal

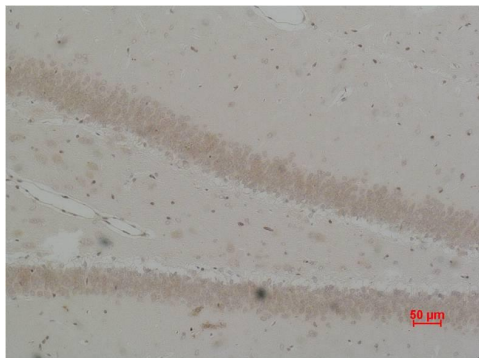
Background

Alternative Names	BEST 2 antibody, FLJ20132 antibody, Vitelliform macular dystrophy 2 homolog antibody
Observed band	50
Human Gene ID	54831
Human Swiss-Prot Number	Q8NFU1
Background	The Bestrophins are a newly described family of anion channels unrelated in primary sequence to any previously characterized channel proteins. Two different topologies for Bestrophin-1 have been proposed.

Selected Validation Data



Western blot analysis of 1) Mouse Brain Tissue, 2) Rat Brain Tissue with Bestrophin-2 Rabbit pAb diluted at 1:2,000.



Immunohistochemical analysis of paraffin-embedded Rat Brain Tissue using Bestrophin-2 Rabbit pAb diluted at 1:500.