

AMPA Receptor(GluR4) Rabbit Polyclonal Antibody(A177)

Catalog No: RA20132

Basic Information

Host species	Rabbit
Applications	WB, IHC
Species Cross-Reactivity	H, R
Specificity	Antibody can detects endogenous AMPA Receptor 4 protein.
Recommended dilutions	WB: 1:500-1,000 IHC: 1:200-500 Optimal dilutions should be determined by the end user.

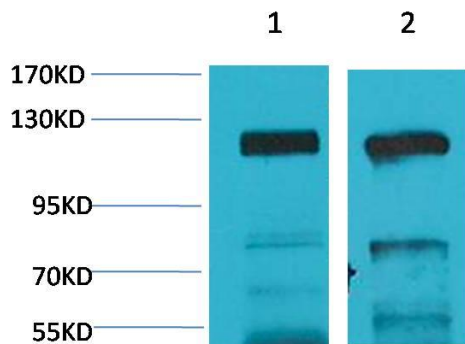
Applications

Formulation	Antigen Affinity Purified IgG in PBS, pH 7.4, containing 0.02% sodium azide as Preservative and 50% Glycerol.
Storage	Store at -20°C. Avoid repeated freeze-thaw cycles.
Concentration	1 mg/ml
Clonality	Polyclonal

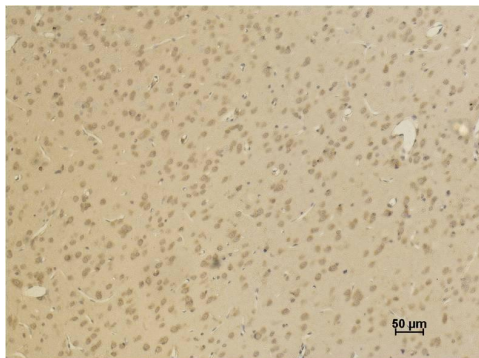
Background

Alternative Names	AMPA 4 antibody, GluA 4 antibody, Glutamate Receptor 4 antibody, Gria4 antibody
Observed band	101
Human Gene ID	2893
Human Swiss-Prot Number	P48058
Background	Glutamate is the major excitatory neurotransmitter and modulates its effects via ionotropic and metabotropic receptors which are different in their molecular, biochemical, pharmacological and physiological properties. The receptor then desensitizes rapidly and enters a transient inactive state, characterized by the presence of bound agonist.

Selected Validation Data



Western blot analysis of 1) Human Brain Tissue, 2) Rat Brain Tissue with AMPA Receptor 4 (GluA4) Rabbit pAb diluted at 1:2,000.



Immunohistochemical analysis of paraffin-embedded Rat Brain Tissue using AMPA Receptor (GluR4) Rabbit pAb diluted at 1:500.