

# EPG5 Rabbit Polyclonal Antibody(21-120)

## Catalog No: RA20127

### Basic Information

Host species	Rabbit
Applications	WB, IHC
Species Cross-Reactivity	H, R, M
Specificity	Antibody can detects endogenous EPG5 protein.
Recommended dilutions	WB: 1:1,000-2,000    IHC: 1:200-500 Optimal dilutions should be determined by the end user.

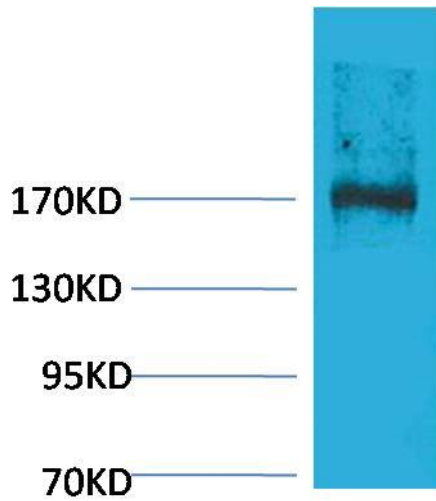
### Applications

Formulation	Affinity Purified IgG, PBS, pH 7.4, containing 0.02% sodium azide as Preservative and 50% Glycerol.
Storage	Store at -20°C. Avoid repeated freeze-thaw cycles.
Concentration	1 mg/ml
Clonality	Polyclonal

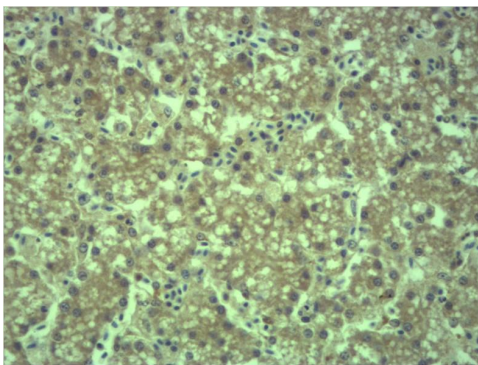
### Background

Alternative Names	Ectopic P granules autophagy protein 5 homolog antibody, HEEW1 antibody, hEPG5 antibody
Observed band	170-292
Human Gene ID	57724
Human Swiss-Prot Number	Q9HCE0
Background	N/A.

Selected Validation Data



Western blot analysis of Rat Liver Tissue with EPG5 Rabbit pAb diluted at 1:2,000.



Immunohistochemical analysis of paraffin-embedded Mouse Liver Tissue using EPG5 Rabbit pAb diluted at 1:500.