

# SLUG Rabbit Polyclonal Antibody(TDY201)

## Catalog No: RA20125

### Basic Information

Host species	Rabbit
Applications	WB, IHC
Species Cross-Reactivity	H, R, M
Specificity	Antibody can detects endogenous SLUG protein.
Recommended dilutions	WB: 1:500-1,000      IHC: 1:200-500 Optimal dilutions should be determined by the end user.

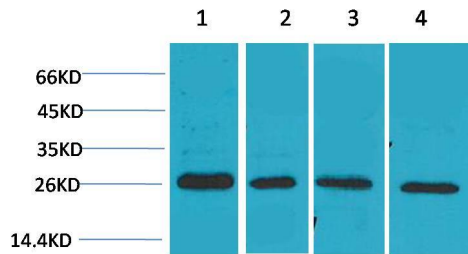
### Applications

Formulation	Affinity Purified IgG, PBS, pH 7.4, containing 0.02% sodium azide as Preservative and 50% Glycerol.
Storage	Store at -20°C. Avoid repeated freeze-thaw cycles.
Concentration	1 mg/ml
Clonality	Polyclonal

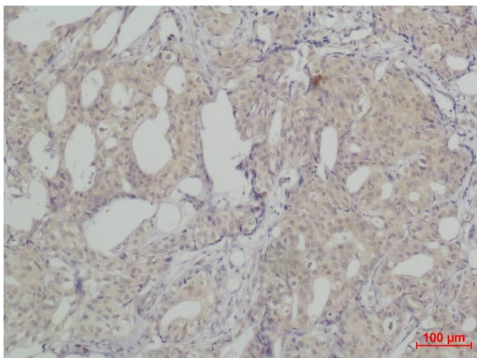
### Background

Alternative Names	MGC10182 antibody, SLUGH1 antibody, SNAI2 antibody, Zinc finger protein SLUG antibody, WS2D antibody
Observed band	30
Human Gene ID	6591
Human Swiss-Prot Number	O43623
Background	Transcriptional repressor. Involved in the generation and migration of neural crest cells.

## Selected Validation Data



Western blot analysis of 1) MCF7, 2) Mouse Heart Tissue, 3) Rat Heart Tissue, 4) Rat Brain Tissue with SLUG Rabbit pAb diluted at 1:2,000.



Immunohistochemical analysis of paraffin-embedded human Breast carcinoma using SLUG Rabbit pAb diluted at 1:500.