

# ERK5 Rabbit Polyclonal Antibody(F139)

## Catalog No: RA20122

### Basic Information

Host species	Rabbit
Applications	WB, IHC
Species Cross-Reactivity	H, R, M
Specificity	Antibody can detects endogenous ERK5 protein.
Recommended dilutions	WB: 1:1,000-2,000    IHC: 1:200-500 Optimal dilutions should be determined by the end user.

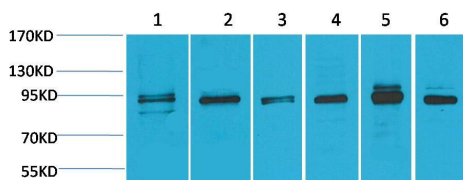
### Applications

Formulation	Affinity Purified IgG, PBS, pH 7.4, containing 0.02% sodium azide as Preservative and 50% Glycerol.
Storage	Store at -20°C. Avoid repeated freeze-thaw cycles.
Concentration	1 mg/ml
Clonality	Polyclonal

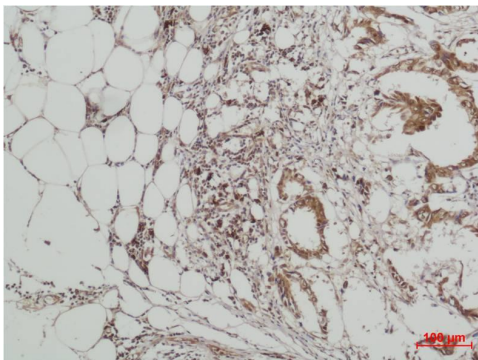
### Background

Alternative Names	MAPK7 antibody, BMK1 antibody, MK07 antibody, PRKM7 antibody, EC 2.7.11.24 antibody
Observed band	89-115
Human Gene ID	5598
Human Swiss-Prot Number	Q13164
Background	ERK5, Mitogen-activated protein kinase 7 also known as MAP kinase 7 is an enzyme that in humans is encoded by the MAPK7 gene. MAPK7 is a member of the MAP kinase family. MAP kinases act as an integration point for multiple biochemical signals, and are involved in a wide variety of cellular processes such as proliferation, differentiation, transcription regulation and development.

## Selected Validation Data



Western blot analysis of 1) Hela, 2)293T, 3)3T3, 4)Mouse Skeletal Muscle, 5)Rat Kidney, 6) Rat Skeletal Muscle with ERK5 Rabbit pAb diluted at 1:2,000.



Immunohistochemical analysis of paraffin-embedded human Breast carcinoma using ERK5 Rabbit pAb diluted at 1:500.