

ERK3 Rabbit Polyclonal Antibody(F138)

Catalog No: RA20120

Basic Information

Host species	Rabbit
Applications	WB, IHC
Species Cross-Reactivity	H, R, M
Specificity	The ERK3 Rabbit Polyclonal Antibody can detects endogenous ERK3 protein.
Recommended dilutions	WB: 1:500-1,000 IHC: 1:200-500 Optimal dilutions should be determined by the end user.

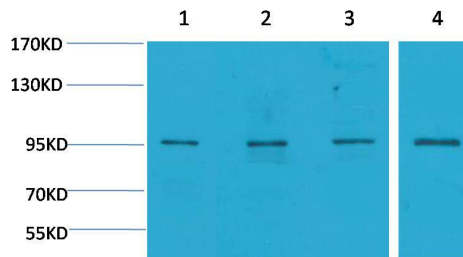
Applications

Formulation	Affinity Purified IgG, PBS, pH 7.4, containing 0.02% sodium azide as Preservative and 50% Glycerol.
Storage	Store at -20°C. Avoid repeated freeze-thaw cycles.
Concentration	1 mg/ml
Clonality	Polyclonal

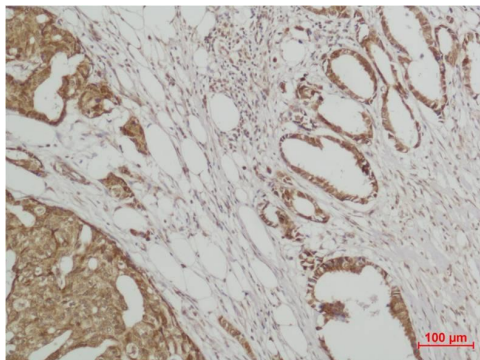
Background

Alternative Names	MAPK6 antibody , p97-MAPK antibody, HsT17250 antibody, MK06 antibody, PRKM6 antibody
Observed band	83-105
Human Gene ID	5597
Human Swiss-Prot Number	Q16659
Background	Erk3, also known as MAPK6 or p97 MAPK, is almost 50% identical to Erk1/2 at the kinase domain located in its amino-terminal region. Mitogen-activated protein kinase 6 is an enzyme that in humans is encoded by the MAPK6 gene.

Selected Validation Data



Western blot analysis of 1) HeLa, 2)293T, 3)3T3, 4)Rat Brain with ERK3 Rabbit pAb diluted at 1:2,000.



Immunohistochemical analysis of paraffin-embedded human Breast carcinoma using ERK3 Rabbit pAb diluted at 1:500.