

# Beclin-1 Rabbit Polyclonal Antibody(F121)

## Catalog No: RA20119

### Basic Information

Host species	Rabbit
Applications	WB
Species Cross-Reactivity	H, R, M
Specificity	Antibody can detects endogenous Beclin-1 protein.
Recommended dilutions	WB: 1:1,000-2,000 Optimal dilutions should be determined by the end user.

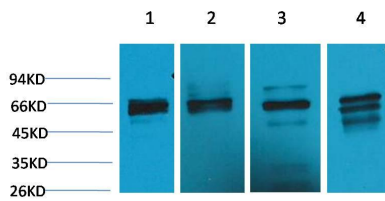
### Applications

Formulation	PBS, pH 7.4, containing 0.02% sodium azide as Preservative and 50% Glycerol.
Storage	Store at -20°C. Avoid repeated freeze-thaw cycles.
Concentration	1 mg/ml
Clonality	Polyclonal

### Background

Alternative Names	ATG6, Bcl-2 interacting protein beclin, BECN1, Coiled coil myosin like BCL2 interacting protein
Observed band	60
Human Gene ID	8678
Human Swiss-Prot Number	Q14457
Background	Autophagy is a catabolic process for the autophagosomic-lysosomal degradation of proteins activated in response to nutrient deprivation and in neurodegenerative conditions. One of the proteins critical to this process is Beclin-1.

## Selected Validation Data



Western blot analysis of 1) Jurkat, 2)293T, 3)C2C12, 4)Rat  
Kidney, with Beclin-1 Rabbit pAb diluted at 1:2,000.