

# HSP60 Rabbit Polyclonal Antibody(F161)

## Catalog No: RA20113

### Basic Information

Host species	Rabbit
Applications	WB, IHC
Species Cross-Reactivity	H, R, M
Specificity	Antibody can detects endogenous HSP60 protein.
Recommended dilutions	WB: 1:1,000-2,000    IHC: 1:200-500 Optimal dilutions should be determined by the end user.

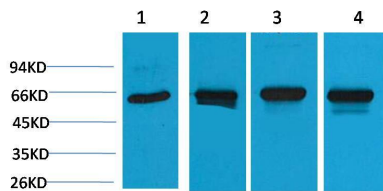
### Applications

Formulation	PBS, pH 7.4, containing 0.02% sodium azide as Preservative and 50% Glycerol.
Storage	Store at -20°C. Avoid repeated freeze-thaw cycles.
Concentration	1 mg/ml
Clonality	Polyclonal

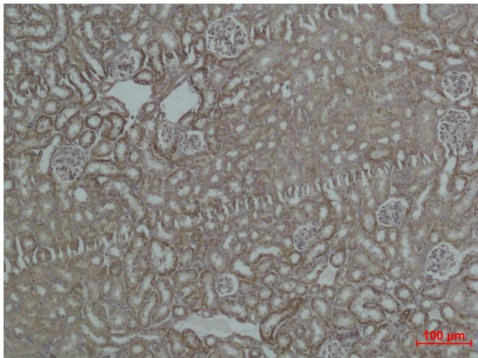
### Background

Alternative Names	60kDa chaperonin, Chaperonin 60, GROEL, HLD4, SPG13, Mitochondrial matrix protein P1
Observed band	60
Human Gene ID	3329
Human Swiss-Prot Number	P10809
Background	HSP60 Implicated in mitochondrial protein import and macromolecular assembly. May facilitate the correct folding of imported proteins. May also prevent misfolding and promote the refolding and proper assembly of unfolded polypeptides generated under stress conditions in the mitochondrial matrix.

## Selected Validation Data



Western blot analysis of 1) HeLa, 2)3T3, 3)Mouse Brain, 4) Rat Brain, with HSP60 Rabbit pAb TDY333 diluted at 1:2,000.



Immunohistochemical analysis of paraffin-embedded Mouse Kidney Tissue using HSP60 ( TDY333 ) Rabbit pAb diluted at 1:500.