

HSP27 Rabbit Polyclonal Antibody(F157)

Catalog No: RA20112

Basic Information

Host species	Rabbit
Applications	WB, IHC
Species Cross-Reactivity	H, R, M
Specificity	Antibody can detects endogenous HSP27 protein.
Recommended dilutions	WB: 1:1,000-2,000 IHC: 1:200-500 Optimal dilutions should be determined by the end user.

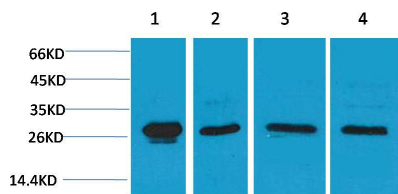
Applications

Formulation	PBS, pH 7.4, containing 0.02% sodium azide as Preservative and 50% Glycerol.
Storage	Store at -20°C. Avoid repeated freeze-thaw cycles.
Concentration	1 mg/ml
Clonality	Polyclonal

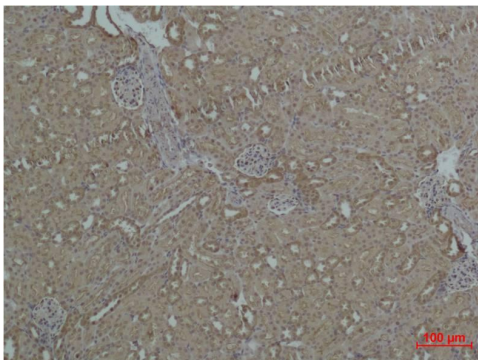
Background

Alternative Names	Heat shock protein 27, CMT2F, HSP B1, HSP28, SRP27, Stress responsive protein 27
Observed band	27
Human Gene ID	3315
Human Swiss-Prot Number	P04792
Background	Heat shock protein 27 (Hsp27) also known as heat shock protein beta-1 (HSPB1) is a protein that in humans is encoded by the HSPB1 gene. Hsp27 is a chaperone of the sHsp (small heat shock protein) group among ubiquitin, α -crystallin, Hsp20 and others. Involved in stress resistance and actin organization.

Selected Validation Data



Western blot analysis of 1) HeLa, 2)C2C12, 3)Mouse Brain, 4)
Rat Brain, with HSP27 Rabbit pAb diluted at 1:2,000.



Immunohistochemical analysis of paraffin-embedded Mouse
Kidney Tissue using HSP27 Rabbit pAb diluted at 1:500.