

# 14-3-3 epsilon Rabbit Polyclonal Antibody

## Catalog No: RA20111

### Basic Information

Host species	Rabbit
Applications	WB, IHC
Species Cross-Reactivity	R, M
Specificity	Antibody can detects endogenous 14-3-3 $\epsilon$ protein.
Recommended dilutions	WB: 1:1,000      IHC:1:200-500 Optimal dilutions should be determined by the end user.

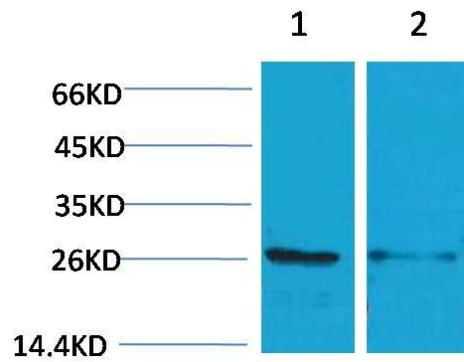
### Applications

Formulation	PBS, pH 7.4, containing 0.02% sodium azide as Preservative and 50% Glycerol.
Storage	Store at -20°C. Avoid repeated freeze-thaw cycles.
Concentration	1 mg/ml
Clonality	Polyclonal

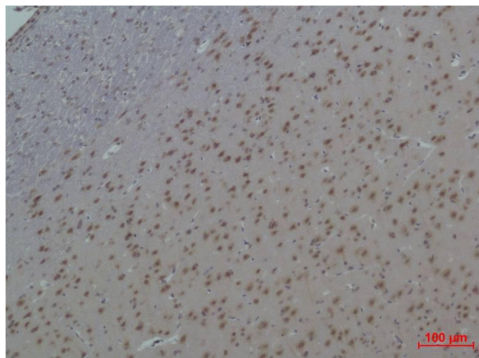
### Background

Alternative Names	14-3-3 E, 14-3-3 epsilon, FLJ45465, MDCR, YWHAE, protein kinase C inhibitor protein 1, MDS, KCIP 1
Observed band	28
Human Gene ID	7531
Human Swiss-Prot Number	P62258
Background	The 14-3-3 family of proteins plays a key regulatory role in signal transduction, checkpoint control, apoptotic and nutrient-sensing pathways. 14-3-3 protein epsilon is a protein that in humans is encoded by the YWHAE gene.

Selected Validation Data



Western blot analysis of 1) Mouse Brain, 2) Rat Brain, with 14-3-3 epsilon Rabbit pAb diluted at 1:2,000.



Immunohistochemical analysis of paraffin-embedded Rat Brain Tissue using 14-3-3 epsilon Rabbit pAb diluted at 1:500.