

HSP90 α Rabbit Polyclonal Antibody(F164)

Catalog No: RA20110

Basic Information

Host species	Rabbit
Applications	WB, IHC
Species Cross-Reactivity	H, R, M
Specificity	Antibody can detects endogenous HSP90 α protein.
Recommended dilutions	WB: 1:1,000-2,000 IHC:1:200-500 Optimal dilutions should be determined by the end user.

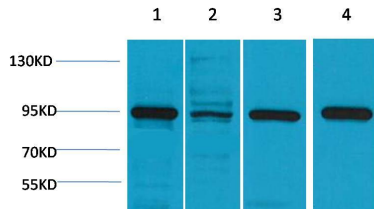
Applications

Formulation	PBS, pH 7.4, containing 0.02% sodium azide as Preservative and 50% Glycerol.
Storage	Store at -20°C. Avoid repeated freeze-thaw cycles.
Concentration	1 mg/ml
Clonality	Polyclonal

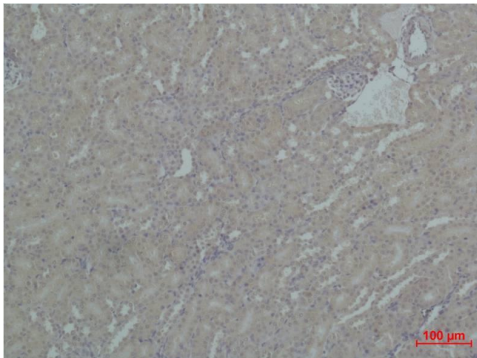
Background

Alternative Names	Heat shock protein 90kDa alpha, HSP 90A, HSPC1, HSPCA, HSPN, LAP2, HSP86, HSP89
Observed band	95
Human Gene ID	3320
Human Swiss-Prot Number	P07900
Background	Hsp90 (heat shock protein 90) is a chaperone protein that assists other proteins to fold properly, stabilizes proteins against heat stress, and aids in protein degradation. In mammalian cells, there are two or more genes encoding cytosolic Hsp90 homologues, with the human Hsp90 α showing 85% sequence identity to Hsp90 β .

Selected Validation Data



Western blot analysis of 1) HeLa, 2)3T3, 3)Mouse Brain, 4) Rat Brain, with HSP90 α Rabbit pAb diluted at 1:2,000.



Immunohistochemical analysis of paraffin-embedded Mouse Kidney Tissue using HSP90 α Rabbit pAb diluted at 1:500.