

# beta 1 Sodium Potassium ATPase Rabbit Polyclonal Antibody

## Catalog No: RA20105

### Basic Information

Host species	Rabbit
Applications	WB, IHC
Species Cross-Reactivity	R, M, H
Specificity	The beta 1 Sodium Potassium ATPase Antibody can detect endogenous beta 1 Sodium Potassium ATPase protein.
Recommended dilutions	WB: 1:1,000-2,000    IHC: 1:100-200 Optimal dilutions should be determined by the end user.

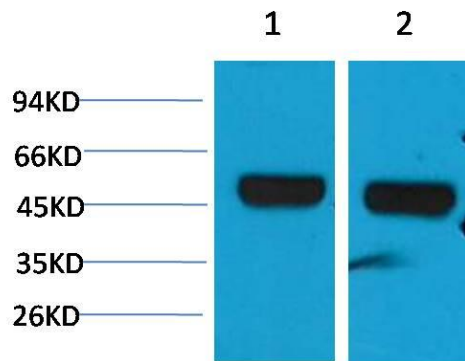
### Applications

Formulation	Immunogen Affinity Purified Rabbit IgG, 1mg/ml in PBS pH7.4, containing 0.02% sodium azide as Preservative and 50% Glycerol.
Storage	Store at -20°C. Avoid repeated freeze-thaw cycles.
Concentration	1 mg/ml
Clonality	Polyclonal

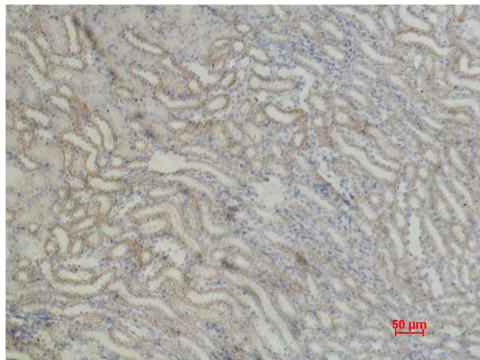
### Background

Alternative Names	ATP1B, Beta 1 subunit of Na(+) K(+) ATPase, Na+/K+ ATPase beta 1 subunit, Sodium/potassium dependent ATPase beta 1 subunit
Observed band	45-50
Human Gene ID	481
Human Swiss-Prot Number	P05026
Background	beta 1 Sodium Potassium ATPase catalyzes the hydrolysis of ATP coupled with the exchange of Na(+) and K(+) ions across the plasma membrane. The beta subunit regulates, through assembly of alpha/beta heterodimers, the number of sodium pumps transported to the plasma membrane.

## Selected Validation Data



Western blot analysis of 1) Mouse Brain, 2) Rat Brain, with beta 1 Sodium Potassium ATPase Rabbit pAb diluted at 1:2,000.



Immunohistochemical analysis of paraffin-embedded Mouse Kidney Tissue using beta 1 Sodium Potassium ATPase Rabbit pAb diluted at 1:200.