

Histone H2B(Tri Methyl Lys5) Rabbit Polyclonal Antibody

Catalog No: RA20082

Basic Information

| | |
|--------------------------|---|
| Host species | Rabbit |
| Applications | WB, IHC |
| Species Cross-Reactivity | H, R, M |
| Specificity | The Histone H2B(Tri Methyl Lys5) antibody can detect endogenous Histone H2B(Tri Methyl Lys5) protein. |
| Recommended dilutions | WB: 1:1,000-2,000 IHC: 1:200-500 Optimal dilutions should be determined by the end user. |

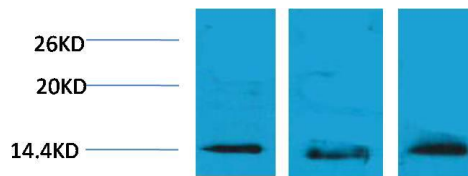
Applications

| | |
|---------------|---|
| Formulation | Rabbit Antiserum, containing 0.02% sodium azide as Preservative and 50% Glycerol. |
| Storage | Store at -20°C. Avoid repeated freeze-thaw cycles. |
| Concentration | 1 mg/ml |
| Clonality | Polyclonal |

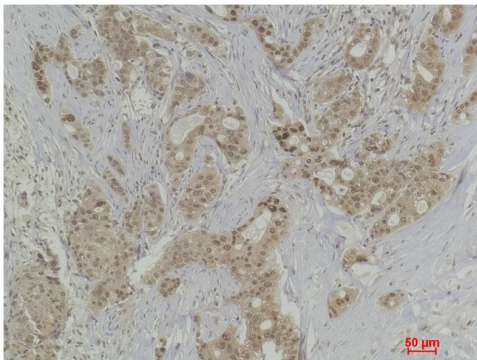
Background

| | |
|-------------------------|---|
| Alternative Names | H2B GL105 antibody, H2B.1 antibody, Histone H2B type 1B antibody, HIST1H2BB antibody |
| Observed band | 14 |
| Human Gene ID | 8349 |
| Human Swiss-Prot Number | P33778 |
| Background | Histone H2B is one of the 5 main histone proteins involved in the structure of chromatin in eukaryotic cells. |

Selected Validation Data



Western blot analysis of 1) HeLa, 2) Rat Brain, 3) 3T3, with Histone H2B (Tri Methyl Lys5) Rabbit pAb diluted at 1:2,000.



Immunohistochemical analysis of paraffin-embedded Human Breast Carcinoma using Histone H2B (Tri Methyl Lys5) Rabbit pAb diluted at 1:500.