

# Histone H4(Acetyl Lys16) Rabbit Polyclonal Antibody

**Catalog No: RA20078**

## Basic Information

Host species	Rabbit
Applications	WB, IHC
Species Cross-Reactivity	H, R, M
Specificity	The Histone H4(Acetyl Lys16) Rabbit Polyclonal Antibody can detect endogenous Histone H3 (Acetyl Lys16) protein.
Recommended dilutions	WB: 1:1,000-2,000    IHC:1:200-500 Optimal dilutions should be determined by the end user.

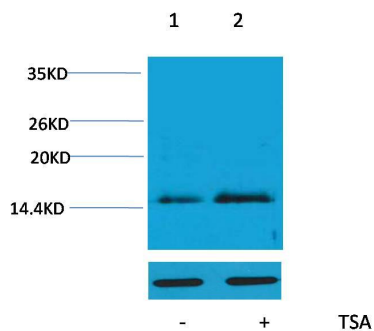
## Applications

Formulation	Immunogen Affinity Purified Rabbit IgG, 1mg/ml in PBS pH7.4, containing 0.02% sodium azide as Preservative and 50% Glycerol.
Storage	Store at -20°C. Avoid repeated freeze-thaw cycles.
Concentration	1 mg/ml
Clonality	Polyclonal

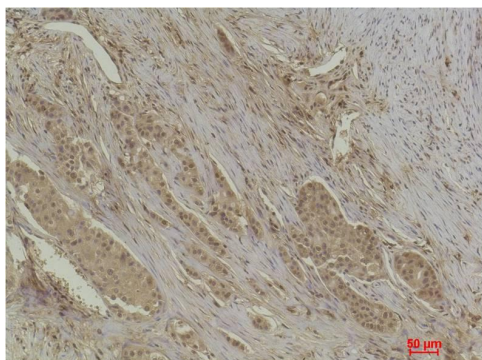
## Background

Alternative Names	Histone 1 H4 antibody, HIST1H4K antibody, MGC24116 antibody, DJ160A22.1 antibody
Observed band	14
Human Gene ID	8294
Human Swiss-Prot Number	P62805
Background	Histone H4 is one of the 5 main histone proteins involved in the structure of chromatin in eukaryotic cells. H4 is a structural component of the nucleosome, and is subject to covalent modification, including acetylation and methylation, which may alter expression of genes located on DNA associated with its parent histone octamer.

## Selected Validation Data



Western blot analysis of extracts from Hela cells, untreated (-) or treated with TSA (1 $\mu$ M, 18 hr; +), using Acetyl-Histone H4(Lys16) Rabbit pAb (upper) 1:2,000 and  $\beta$ -actin (5B7) Mouse mAb (lower) 1:5,000.



Immunohistochemical analysis of paraffin-embedded Human Breast Carcinoma using Histone H4 (Acetyl Lys16) Rabbit pAb diluted at 1:500.