

Histone H2B(Acetyl Lys5) Rabbit Polyclonal Antibody

Catalog No: RA20077

Basic Information

Host species	Rabbit
Applications	WB
Species Cross-Reactivity	H, R, M
Specificity	The Histone H2B(Acetyl Lys5) antibody can detect endogenous Histone H2B(Acetyl Lys5) protein.
Recommended dilutions	WB: 1:1,000-2,000 Optimal dilutions should be determined by the end user.

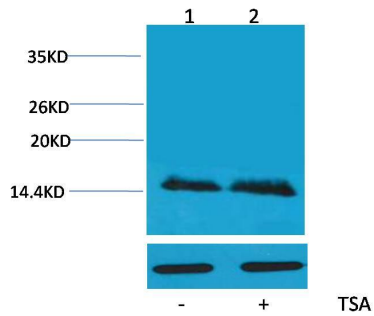
Applications

Formulation	Immunogen Affinity Purified Rabbit IgG, 1mg/ml in PBS pH7.4, containing 0.02% sodium azide as Preservative and 50% Glycerol.
Storage	Store at -20°C. Avoid repeated freeze-thaw cycles.
Concentration	1 mg/ml
Clonality	Polyclonal

Background

Alternative Names	H2B GL105 antibody, H2B.1 antibody, Histone H2B type 1B antibody, HIST1H2BB antibody
Observed band	14
Human Gene ID	8349
Human Swiss-Prot Number	P33778
Background	Histone H2B is one of the 5 main histone proteins involved in the structure of chromatin in eukaryotic cells.

Selected Validation Data



Western blot analysis of extracts from Hela cells, untreated (-) or treated with TSA (1 μ M, 18 hr; +), using Acetyl-Histone H2B(Lys5) Rabbit pAb (upper) 1:2,000 and β -actin (5B7) Mouse mAb (lower) 1:5,000.