

# Histone H2A.X(Acetyl Lys5) Rabbit Polyclonal Antibody

## Catalog No: RA20075

### Basic Information

Host species	Rabbit
Applications	WB, IHC
Species Cross-Reactivity	H, R, M
Specificity	The Histone H2A.X(Acetyl Lys5) Rabbit Polyclonal Antibody can detect endogenous Histone H2A.X(Acetyl Lys5) protein.
Recommended dilutions	WB: 1:1,000-2,000      IHC: 1:200-500 Optimal dilutions should be determined by the end user.

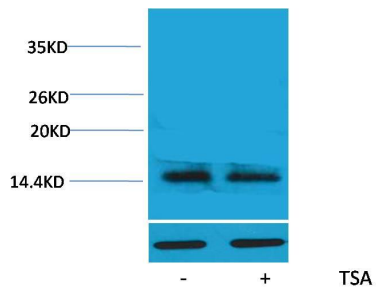
### Applications

Formulation	Rabbit Antiserum, containing 0.02% sodium azide as Preservative and 50% Glycerol.
Storage	Store at -20°C. Avoid repeated freeze-thaw cycles.
Concentration	1 mg/ml
Clonality	Polyclonal

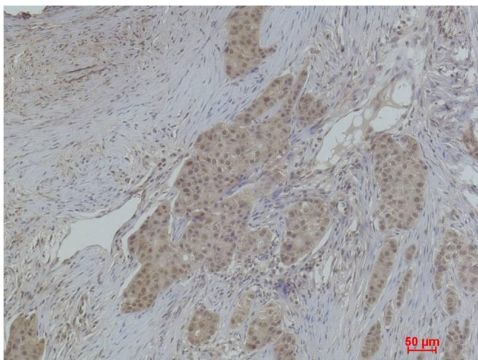
### Background

Alternative Names	H2A histone family member X antibody, H2AFX antibody, H2AX Histone antibody, Histone H2AX antibody
Observed band	15
Human Gene ID	3014
Human Swiss-Prot Number	P16104
Background	Histone H2A which replaces conventional H2A in a subset of nucleosomes. Nucleosomes wrap and compact DNA into chromatin, limiting DNA accessibility to the cellular machineries which require DNA as a template.

## Selected Validation Data



Western blot analysis of extracts from HeLa cells, untreated (-) or treated with TSA (1 $\mu$ M, 18 hr; +), using Acetyl-Histone H2A.X (Lys5) Rabbit pAb (upper) 1:2,000 and  $\beta$ -actin (5B7) Mouse mAb (lower) 1:5,000.



Immunohistochemical analysis of paraffin-embedded Human Breast Carcinoma using Histone H2A.X (Acetyl Lys5) Rabbit pAb diluted at 1:500.