

# Histone H2B(Phospho Ser14) Rabbit Polyclonal Antibody

**Catalog No: RA20074**

## Basic Information

Host species	Rabbit
Applications	WB, IHC
Species Cross-Reactivity	H, R, M
Specificity	The Histone H2B(Phospho Ser14) antibody can detect endogenous Histone H2B(Phospho Ser14) protein.
Recommended dilutions	WB: 1:1,000-2,000      IHC: 1:200-500 Optimal dilutions should be determined by the end user.

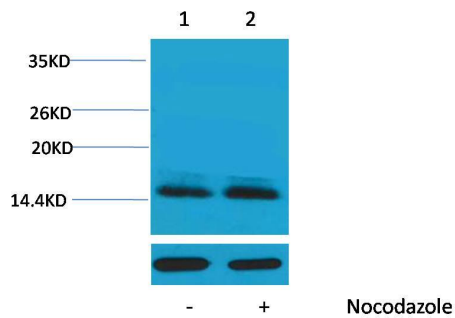
## Applications

Formulation	Rabbit Antiserum, containing 0.02% sodium azide as Preservative and 50% Glycerol.
Storage	Store at -20°C. Avoid repeated freeze-thaw cycles.
Concentration	1 mg/ml
Clonality	Polyclonal

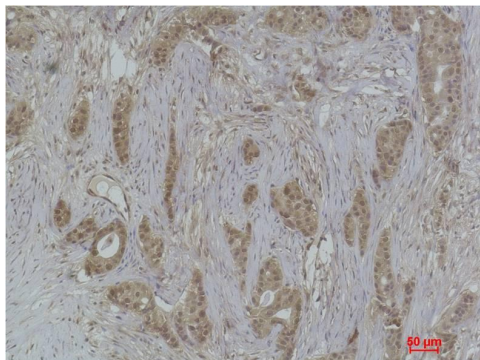
## Background

Alternative Names	H2B GL105 antibody, H2B.1 antibody, Histone H2B type 1B antibody, HIST1H2BB antibody
Observed band	14
Human Gene ID	8349
Human Swiss-Prot Number	P33778
Background	Histone H2B is one of the 5 main histone proteins involved in the structure of chromatin in eukaryotic cells.

## Selected Validation Data



Western blot analysis of extracts from HeLa cells, untreated (-) or treated with Nocodazole (1 $\mu$ g/ml, 24 hr; +), using Phospho-Histone H2B(Ser14) Rabbit pAb (upper) 1:2,000 and  $\beta$ -actin (5B7) Mouse mAb (lower) 1:5000.



Immunohistochemical analysis of paraffin-embedded Human Breast Carcinoma using Histone H2B (Phospho Ser14) Rabbit pAb diluted at 1:500.