

Histone H1(Phospho Thr17) Rabbit Polyclonal Antibody

Catalog No: RA20070

Basic Information

Host species	Rabbit
Applications	WB, IHC
Species Cross-Reactivity	H, R, M
Specificity	The Histone H1(Phospho Thr17) antibody can detect endogenous Histone H1(Phospho Thr17) protein.
Recommended dilutions	WB: 1:1,000-2,000 IHC:1:200-500 Optimal dilutions should be determined by the end user.

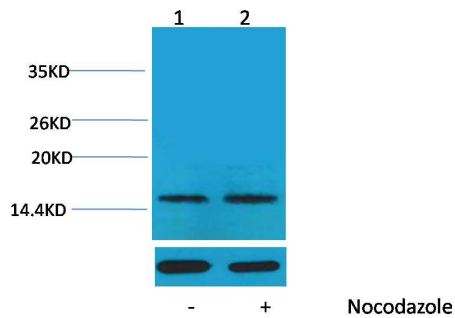
Applications

Formulation	Rabbit Antiserum, containing 0.02% sodium azide as Preservative and 50% Glycerol.
Storage	Store at -20°C. Avoid repeated freeze-thaw cycles.
Concentration	1 mg/ml
Clonality	Polyclonal

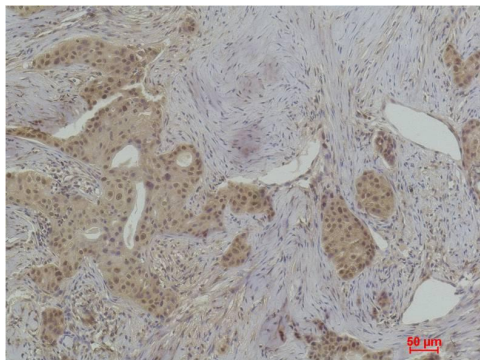
Background

Alternative Names	H1 antibody, HIST1H1B antibody, Histone 1 antibody, Histone H1a antibody
Observed band	17-25
Human Gene ID	3005
Human Swiss-Prot Number	P07305
Background	Histone H1 is one of the five main histone protein families which are components of chromatin in eukaryotic cells. May play a key role in the control of gene expression during oogenesis and early embryogenesis, presumably through the perturbation of chromatin structure.

Selected Validation Data



Western blot analysis of extracts from HeLa cells, untreated (-) or treated with Nocodazole (1 μ g/ml, 24 hr; +), using Phospho-Histone H1(Thr17) Rabbit pAb (upper) 1:2,000 and β -actin (5B7) Mouse mAb (lower) 1:5000.



Immunohistochemical analysis of paraffin-embedded Human Breast Carcinoma using Histone H1 (Phospho Thr17) Rabbit pAb diluted at 1:500.