

# Histone H1(Phospho Thr3) Rabbit Polyclonal Antibody

**Catalog No: RA20069**

## Basic Information

Host species	Rabbit
Applications	WB, IHC
Species Cross-Reactivity	H, R, M
Specificity	The Histone H1(Phospho Thr3) antibody can detect endogenous Histone H1(Phospho Thr3) protein.
Recommended dilutions	WB: 1:1,000-2,000    IHC: 1:200-500 Optimal dilutions should be determined by the end user.

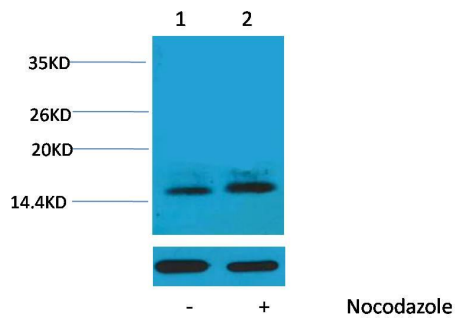
## Applications

Formulation	Rabbit Antiserum, containing 0.02% sodium azide as Preservative and 50% Glycerol.
Storage	Store at -20°C. Avoid repeated freeze-thaw cycles.
Concentration	1 mg/ml
Clonality	Polyclonal

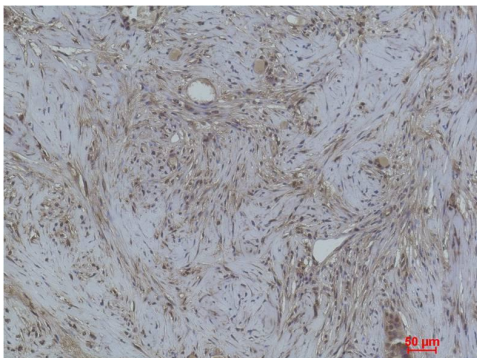
## Background

Alternative Names	H1 antibody, HIST1H1B antibody, Histone 1 antibody, Histone H1a antibody
Observed band	17-25
Human Gene ID	3005
Human Swiss-Prot Number	P07305
Background	Histone H1 is one of the five main histone protein families which are components of chromatin in eukaryotic cells. May play a key role in the control of gene expression during oogenesis and early embryogenesis, presumably through the perturbation of chromatin structure.

## Selected Validation Data



Western blot analysis of extracts from HeLa cells, untreated (-) or treated with Nocodazole (1 $\mu$ g/ml, 24 hr; +), using Phospho-Histone H1(Thr3) Rabbit pAb (upper) 1:2,000 and  $\beta$ -actin (5B7) Mouse mAb (lower) 1:5000.



Immunohistochemical analysis of paraffin-embedded Human Breast Carcinoma using Histone H1 (Phospho Thr3) Rabbit pAb diluted at 1:500.