

Histone H2B(Acetyl Lys20) Rabbit Polyclonal Antibody

Catalog No: RA20064

Basic Information

| | |
|--------------------------|---|
| Host species | Rabbit |
| Applications | WB, IHC |
| Species Cross-Reactivity | H, R, M |
| Specificity | The Histone H2B(Acetyl Lys20) Rabbit Polyclonal Antibody can detect endogenous Histone H2B(Acetyl Lys20) protein. |
| Recommended dilutions | WB: 1:1,000-2,000 IHC:1:200-500 Optimal dilutions should be determined by the end user. |

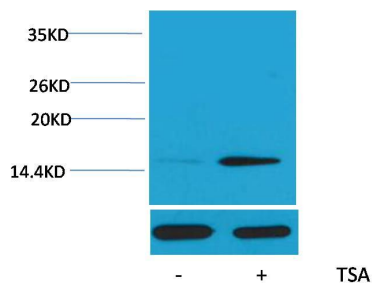
Applications

| | |
|---------------|---|
| Formulation | Rabbit Antiserum, containing 0.02% sodium azide as Preservative and 50% Glycerol. |
| Storage | Store at -20°C. Avoid repeated freeze-thaw cycles. |
| Concentration | 1 mg/ml |
| Clonality | Polyclonal |

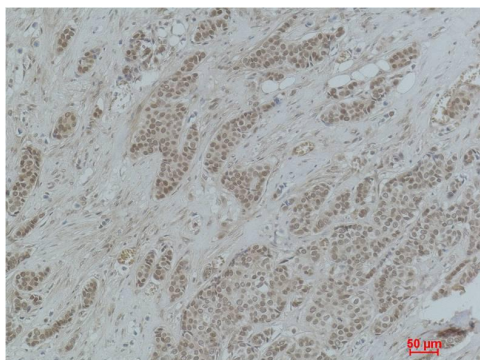
Background

| | |
|-------------------------|---|
| Alternative Names | H2B GL105 antibody, H2B.1 antibody, Histone H2B type 1B antibody, HIST1H2BB antibody |
| Observed band | 14 |
| Human Gene ID | 8349 |
| Human Swiss-Prot Number | P33778 |
| Background | Histone H2B is one of the 5 main histone proteins involved in the structure of chromatin in eukaryotic cells. |

Selected Validation Data



Western blot analysis of extracts from Hela cells, untreated (-) or treated with TSA ($1\mu\text{M}$, 18 hr; +), using Acetyl-Histone H2B (Lys20) Rabbit pAb (upper) 1:2000 and β -actin (5B7) Mouse mAb (lower) 1:5000.



Immunohistochemical analysis of paraffin-embedded Human Breast Carcinoma using Histone H2B (Acetyl Lys20) Rabbit pAb diluted at 1:500.