

Histone H2A.Z(Acetyl Lys7) Rabbit Polyclonal Antibody

Catalog No: RA20061

Basic Information

Host species	Rabbit
Applications	WB, IHC
Species Cross-Reactivity	H, R, M
Specificity	The Histone H2A.Z (Acetyl Lys7) Rabbit Polyclonal Antibody can detect endogenous Histone H2A.Z (Acetyl Lys7) protein.
Recommended dilutions	WB: 1:500-1,000 IHC:1:200-500 Optimal dilutions should be determined by the end user.

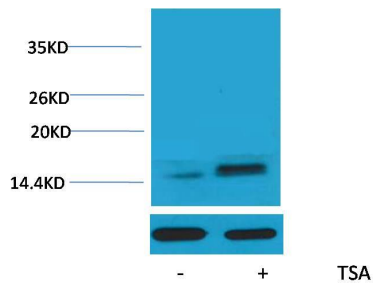
Applications

Formulation	Rabbit Antiserum, containing 0.02% sodium azide as Preservative and 50% Glycerol.
Storage	Store at -20°C. Avoid repeated freeze-thaw cycles.
Concentration	1 mg/ml
Clonality	Polyclonal

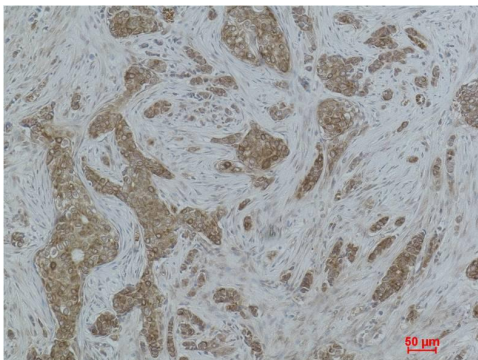
Background

Alternative Names	H2A.Z antibody, H2AFZ antibody, MGC117173 antibody
Observed band	14
Human Gene ID	3015
Human Swiss-Prot Number	POC055
Background	Histone H2A.Z is a protein that in humans is encoded by the H2AFZ gene. Histone H2AZ is a variant of histone H2A, and is used to mediate the thermosensory response, and is essential to perceive the ambient temperature.

Selected Validation Data



Western blot analysis of extracts from HeLa cells, untreated (-) or treated with TSA (1 μ M, 18 hr; +), using Acetyl-Histone H2A.Z (Lys7) Rabbit pAb (upper) 1:2000 and β -actin (5B7) Mouse mAb (lower) 1:5000.



Immunohistochemical analysis of paraffin-embedded Human Breast Carcinoma using Histone H2A.Z (Acetyl Lys7) Rabbit pAb diluted at 1:500.