

Histone H2A(Acetyl Lys15) Rabbit Polyclonal Antibody

Catalog No: RA20060

Basic Information

| | |
|--------------------------|---|
| Host species | Rabbit |
| Applications | WB, IHC |
| Species Cross-Reactivity | H, R, M |
| Specificity | The Histone H2A(Acetyl Lys15) Rabbit Polyclonal Antibody can detect endogenous Histone H2A(Acetyl Lys15) protein. |
| Recommended dilutions | WB: 1:500-1,000 IHC: 1:200-500 Optimal dilutions should be determined by the end user. |

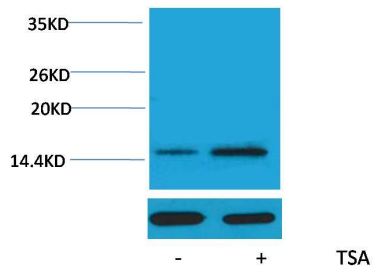
Applications

| | |
|---------------|---|
| Formulation | Rabbit Antiserum, containing 0.02% sodium azide as Preservative and 50% Glycerol. |
| Storage | Store at -20°C. Avoid repeated freeze-thaw cycles. |
| Concentration | 1 mg/ml |
| Clonality | Polyclonal |

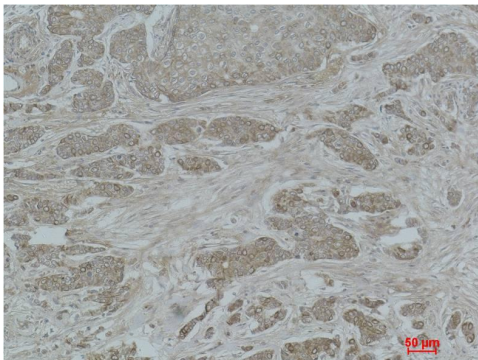
Background

| | |
|-------------------------|---|
| Alternative Names | H2A 615 antibody, H2A GL101 antibody, H2A.1 antibody, HIST1H2AE antibody, MGC74460 antibody |
| Observed band | 14 |
| Human Gene ID | 8335 |
| Human Swiss-Prot Number | P04908 |
| Background | Histone H2A is one of the five main histone proteins involved in the structure of chromatin in eukaryotic cells. Core component of nucleosome. Nucleosomes wrap and compact DNA into chromatin, limiting DNA accessibility to the cellular machineries which require DNA as a template. |

Selected Validation Data



Western blot analysis of extracts from HeLa cells, untreated (-) or treated with TSA ($1\mu\text{M}$, 18 hr; +), using Acetyl-Histone H2A (Lys15) Rabbit pAb (upper) 1:2000 and β -actin (5B7) Mouse mAb (lower) 1:5000.



Immunohistochemical analysis of paraffin-embedded Human Breast Carcinoma using Histone H2A (Acetyl Lys15) Rabbit pAb diluted at 1:500.