

Histone H2A(Acetyl Lys9) Rabbit Polyclonal Antibody

Catalog No: RA20059

Basic Information

Host species	Rabbit
Applications	WB, IHC
Species Cross-Reactivity	H, R, M
Specificity	The Histone H2A(Acetyl Lys9) Rabbit Polyclonal Antibody can detect endogenous Histone H2A(Acetyl Lys9) protein.
Recommended dilutions	WB: 1:1,000-2,000 IHC: 1:200-500 Optimal dilutions should be determined by the end user.

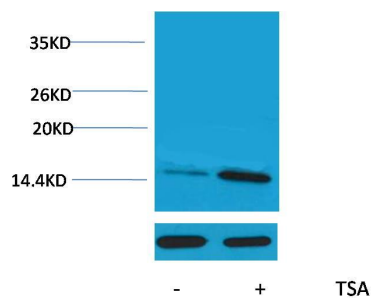
Applications

Formulation	Rabbit Antiserum, containing 0.02% sodium azide as Preservative and 50% Glycerol.
Storage	Store at -20°C. Avoid repeated freeze-thaw cycles.
Concentration	1 mg/ml
Clonality	Polyclonal

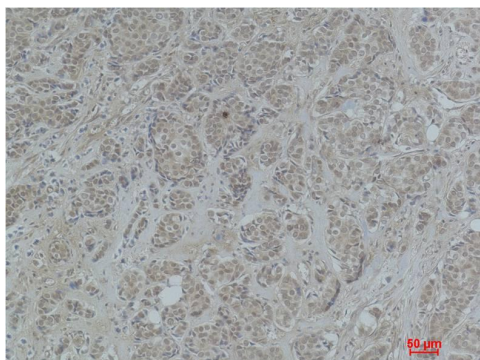
Background

Alternative Names	H2A 615 antibody, H2A GL101 antibody, H2A.1 antibody, HIST1H2AE antibody, MGC74460 antibody
Observed band	14
Human Gene ID	8335
Human Swiss-Prot Number	P04908
Background	Histone H2A is one of the five main histone proteins involved in the structure of chromatin in eukaryotic cells. Core component of nucleosome. Nucleosomes wrap and compact DNA into chromatin, limiting DNA accessibility to the cellular machineries which require DNA as a template.

Selected Validation Data



Western blot analysis of extracts from HeLa cells, untreated (-) or treated with TSA ($1\mu\text{M}$, 18 hr; +), using Acetyl-Histone H2A (Lys9) Rabbit pAb (upper) 1:2000 and β -actin (5B7) Mouse mAb (lower) 1:5000.



Immunohistochemical analysis of paraffin-embedded Human Breast Carcinoma using Histone H2A (Acetyl Lys9) Rabbit pAb diluted at 1:500.