

# Vimentin Rabbit Polyclonal Antibody

## Catalog No: RA20054

### Basic Information

Host species	Rabbit
Applications	WB, IHC
Species Cross-Reactivity	H, R, M
Specificity	Antibody can detects endogenous Vimentin protein.
Recommended dilutions	WB: 1:1,000-2,000    IHC: 1:500-1,000 Optimal dilutions should be determined by the end user.

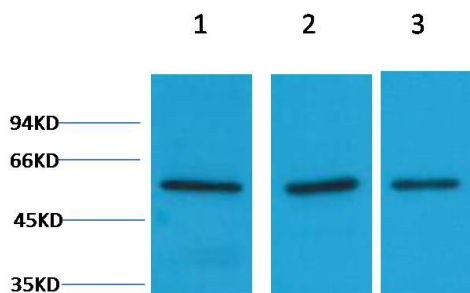
### Applications

Formulation	Immunogen Affinity Purified Rabbit IgG, 1mg/ml in PBS pH7.4, containing 0.02% sodium azide as Preservative and 50% Glycerol.
Storage	Store at -20°C. Avoid repeated freeze-thaw cycles.
Concentration	1 mg/ml
Clonality	Polyclonal

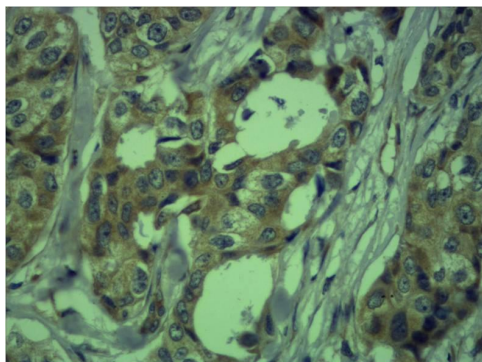
### Background

Alternative Names	FLJ36605 antibody, VIM antibody, VIME antibody
Observed band	50-57
Human Gene ID	7431
Human Swiss-Prot Number	P08670
Background	The cytoskeleton consists of three types of cytosolic fibers: microfilaments (actin filaments), intermediate filaments, and microtubules. Vimentin is a type III intermediate filament (IF) protein that is expressed in mesenchymal cells.

## Selected Validation Data



Western blot analysis of 1) Hela, 2) Mouse Brain, 3) Rat Brain tissue with Vimentin Rabbit pAb diluted at 1:2,000.



Immunohistochemical analysis of paraffin-embedded human breast carcinoma using Vimentin Rabbit pAb diluted at 1:500.