

Histone H3(Acetyl Lys36) Rabbit Polyclonal Antibody

Catalog No: RA20053

Basic Information

Host species	Rabbit
Applications	WB, IHC
Species Cross-Reactivity	H, R, M
Specificity	The Histone H3(Acetyl Lys36) Rabbit Polyclonal Antibody can detect endogenous Histone H3 (Acetyl Lys36) protein.
Recommended dilutions	WB: 1:200-500 IHC: 1:200-500 Optimal dilutions should be determined by the end user.

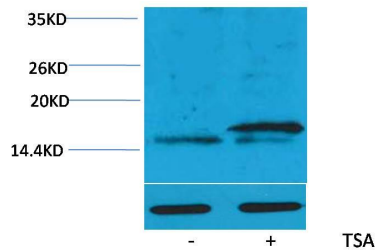
Applications

Formulation	Purified Rabbit IgG, 1mg/ml in PBS pH7.4, containing 0.02% sodium azide as Preservative and 50% Glycerol.
Storage	Store at -20°C. Avoid repeated freeze-thaw cycles.
Concentration	1 mg/ml
Clonality	Polyclonal

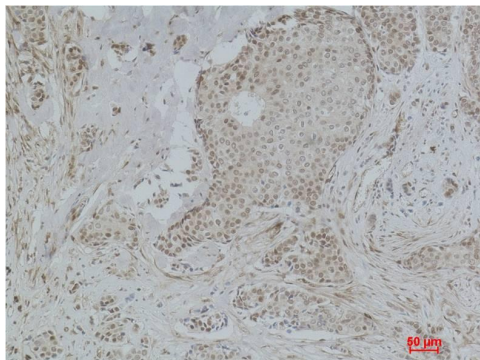
Background

Alternative Names	H3 histone antibody, HIST1H3A antibody, Histone cluster 1, H3a antibody
Observed band	15-17
Human Gene ID	8290
Human Swiss-Prot Number	P68431
Background	Histone H3 is one of the five main histone proteins involved in the structure of chromatin in eukaryotic cells. Core component of nucleosome. Nucleosomes wrap and compact DNA into chromatin, limiting DNA accessibility to the cellular machineries which require DNA as a template. Histones thereby play a central role in transcription regulation, DNA repair, DNA replication and chromosomal stability.

Selected Validation Data



Western blot analysis of extracts from HeLa cells, untreated (-) or treated with TSA (1 μ M, 18 hr; +), using Acetyl-Histone H3 (Lys36) Rabbit pAb (upper) TDY2611:2000 and Histone H3 (1G1) Mouse mAb (lower) TDY055 1:2000.



Immunohistochemical analysis of paraffin-embedded Human Breast Carcinoma using Histone H3 (Acetyl Lys36) (TDY261) Rabbit pAb diluted at 1:500.