

Histone H4(Tri Methyl Lys20) Rabbit Polyclonal Antibody

Catalog No: RA20041

Basic Information

Host species	Rabbit
Applications	WB, IHC
Species Cross-Reactivity	H, R, M
Specificity	The Histone H4(Tri Methyl Lys20) Rabbit Polyclonal Antibody can detect endogenous Histone H4 (Tri Methyl Lys20) protein.
Recommended dilutions	WB: 1:500-1,000 IHC: 1:100-200 Optimal dilutions should be determined by the end user.

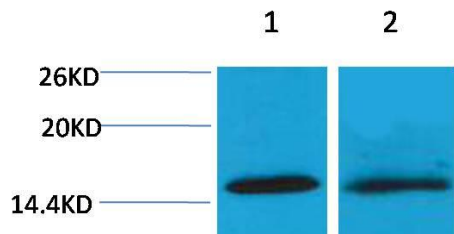
Applications

Formulation	Rabbit Antiserum, containing 0.02% sodium azide as Preservative and 50% Glycerol.
Storage	Store at -20°C. Avoid repeated freeze-thaw cycles.
Concentration	1 mg/ml
Clonality	Polyclonal

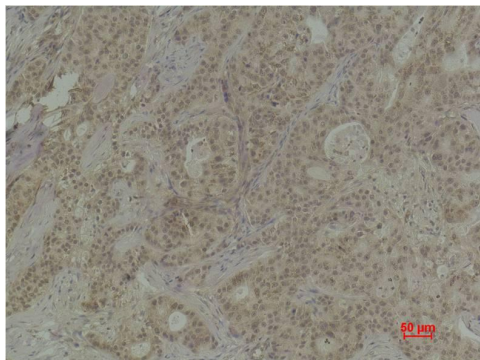
Background

Alternative Names	Histone 1 H4 antibody, HIST1H4K antibody, MGC24116 antibody, DJ160A22.1 antibody
Observed band	14
Human Gene ID	8294
Human Swiss-Prot Number	P62805
Background	Histone H4 is one of the 5 main histone proteins involved in the structure of chromatin in eukaryotic cells. H4 is a structural component of the nucleosome, and is subject to covalent modification, including acetylation and methylation, which may alter expression of genes located on DNA associated with its parent histone octamer.

Selected Validation Data



Western blot analysis of 1) Hela, 2)3T3 with Histone H4(Tri Methyl Lys20) Rabbit pAb diluted at 1:2,000.



Immunohistochemical analysis of paraffin-embedded Human Breast Carcinoma using Histone H4(Tri Methyl Lys20) Rabbit pAb diluted at 1:200.