

# Histone H3(Acetyl Lys4 ) Rabbit Polyclonal Antibody

**Catalog No: RA20029**

## Basic Information

Host species	Rabbit
Applications	WB, IHC
Species Cross-Reactivity	H, R, M
Specificity	The Histone H3(Acetyl Lys4) Rabbit Polyclonal Antibody can detect endogenous Histone H3 (Acetyl Lys4) protein.
Recommended dilutions	WB: 1:500-1,000      IHC: 1:100-200 Optimal dilutions should be determined by the end user.

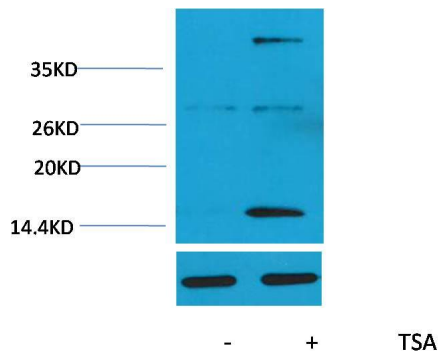
## Applications

Formulation	PBS, pH 7.4, containing 0.02% sodium azide as Preservative and 50% Glycerol.
Storage	Store at -20°C. Avoid repeated freeze-thaw cycles.
Concentration	1 mg/ml
Clonality	Polyclonal

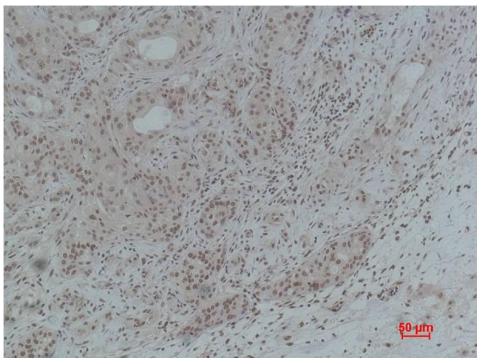
## Background

Alternative Names	H3 histone antibody, HIST1H3A antibody, Histone cluster 1, H3a antibody
Observed band	15-17
Human Gene ID	8290
Human Swiss-Prot Number	P68431
Background	Histone H3 is one of the five main histone proteins involved in the structure of chromatin in eukaryotic cells. Core component of nucleosome. Nucleosomes wrap and compact DNA into chromatin, limiting DNA accessibility to the cellular machineries which require DNA as a template. Histones thereby play a central role in transcription regulation, DNA repair, DNA replication and chromosomal stability.

## Selected Validation Data



Western blot analysis of extracts from HeLa cells, untreated (-) or treated with TSA (1 $\mu$ M, 18 hr; +), using Acetyl-Histone H3 (Lys4) Rabbit pAb (upper) 1:1000 and Histone H3 (1G1) Mouse mAb (lower) 1:2000.



Immunohistochemical analysis of paraffin-embedded Human Breast Carcinoma using Histone H3(Acetyl Lys4) Rabbit pAb diluted at 1:200.