

# GAP43 Rabbit Polyclonal Antibody

## Catalog No: RA20012

### Basic Information

Host species	Rabbit
Applications	WB, IHC
Species Cross-Reactivity	H, R, M
Specificity	The GAP43 antibody can detect endogenous GAP43 protein.
Recommended dilutions	WB: 1:1,000-3,000    IHC: 1:500-1,000 Optimal dilutions should be determined by the end user.

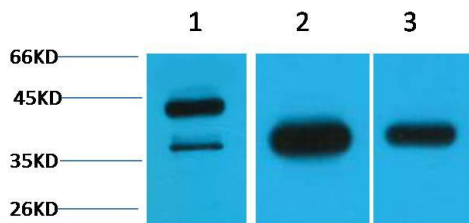
### Applications

Formulation	PBS, pH 7.4, containing 0.02% sodium azide as Preservative and 50% Glycerol.
Storage	Store at -20°C. Avoid repeated freeze-thaw cycles.
Concentration	1 mg/ml
Clonality	Polyclonal

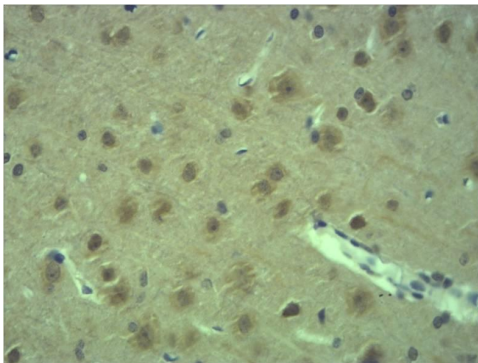
### Background

Alternative Names	B50 antibody, Growth Associated Protein 43 antibody, Nerve Growth Related Peptide antibody
Observed band	38,43
Human Gene ID	2596
Human Swiss-Prot Number	P17677
Background	Growth Associated Protein 43 also known as GAP43 is a protein that in humans is encoded by the GAP43 gene. GAP43, is a nervous tissue-specific cytoplasmic protein that can be attached to the membrane via a dual palmitoylation sequence on cysteines 3 and 4. This sequence targets GAP43 to lipid rafts.

## Selected Validation Data



Western blot analysis of 1) Hela, 2) Mouse Brain, 3) Rat Brain tissue with  $\alpha$ -Smooth Muscle Actin Rabbit pAb diluted at 1:3,000.



Immunohistochemical analysis of paraffin-embedded Mouse Brain Tissue using  $\alpha$ -Smooth Muscle Actin Rabbit pAb diluted at 1:500.