

Histone H2A.Z Rabbit Polyclonal Antibody

Catalog No: RA20011

Basic Information

Host species	Rabbit
Applications	WB, IHC
Species Cross-Reactivity	R, M
Specificity	The Histone H2A.Z antibody can detect endogenous Histone H2A.Z protein.
Recommended dilutions	WB: 1:1,000-2,000 IHC: 1:500-1,000 Optimal dilutions should be determined by the end user.

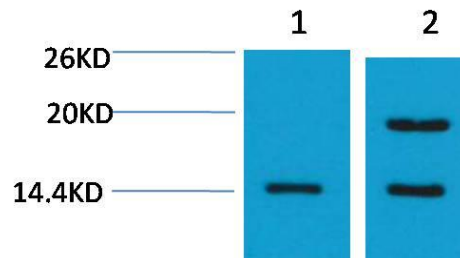
Applications

Formulation	PBS, pH 7.4, containing 0.02% sodium azide as Preservative and 50% Glycerol.
Storage	Store at -20°C. Avoid repeated freeze-thaw cycles.
Concentration	1 mg/ml
Clonality	Polyclonal

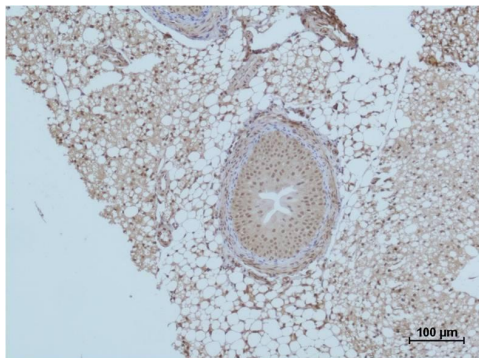
Background

Alternative Names	H2A.Z antibody, H2AFZ antibody, MGC117173 antibody
Observed band	14
Human Gene ID	3015
Human Swiss-Prot Number	POC0S5
Background	Histone H2A.Z is a protein that in humans is encoded by the H2AFZ gene. Histone H2AZ is a variant of histone H2A, and is used to mediate the thermosensory response, and is essential to perceive the ambient temperature.

Selected Validation Data



Western blot analysis of 1) Rat Brain, 2) Mouse Brain tissue with Histone H2A.Z Rabbit pAb diluted at 1:2,000.



Immunohistochemical analysis of paraffin-embedded Mouse Spleen Tissue using Histone H2A.Z Rabbit pAb diluted at 1:500.