

# $\alpha$ -Smooth Muscle Actin Rabbit Polyclonal Antibody

## Catalog No: RA20007

### Basic Information

Host species	Rabbit
Applications	WB, IHC
Species Cross-Reactivity	H, R, M
Specificity	The $\alpha$ -Smooth Muscle Actin antibody can detect endogenous $\alpha$ -Smooth Muscle Actin protein.
Recommended dilutions	WB: 1:2,000-5,000    IHC: 1:500-1,000 Optimal dilutions should be determined by the end user.

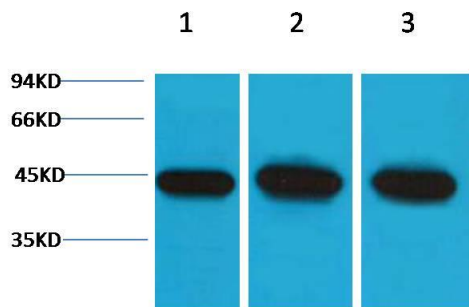
### Applications

Formulation	PBS, pH 7.4, containing 0.02% sodium azide as Preservative and 50% Glycerol.
Storage	Store at -20°C. Avoid repeated freeze-thaw cycles.
Concentration	1 mg/ml
Clonality	Polyclonal

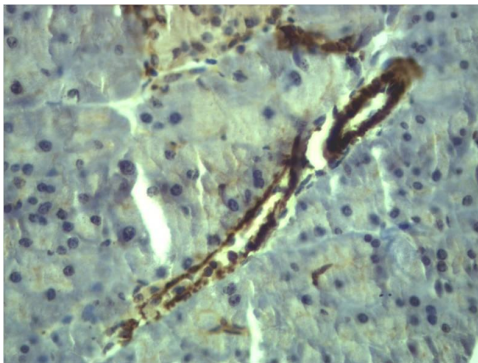
### Background

Alternative Names	AAT6 antibody, ACTA2 antibody, alpha actin 2 antibody, GIG46 antibody, ACTSA antibody, ACTVS antibody
Observed band	42
Human Gene ID	59
Human Swiss-Prot Number	P62736
Background	Actin is a globular multi-functional protein that forms microfilaments. ACTA2 codes for an $\alpha$ -actin located in the smooth muscle, and also in vascular smooth muscle.

## Selected Validation Data



Western blot analysis of 1) HeLa, 2)3T3, 3) Rat Kidney tissue with  $\alpha$ -Smooth Muscle Actin Rabbit pAb diluted at 1:5,000.



Immunohistochemical analysis of paraffin-embedded Mouse Colon Tissue using  $\alpha$ -Smooth Muscle Actin Rabbit pAb diluted at 1:500.